

# Tindal Square and Market Road

## Project Update



Transforming Tindal Square:  
Public Realm Improvements

### Bulletin No. 10

24<sup>th</sup> June 2022

### Contractor Details:

**Tindal Square** – Dyer & Butler

**Market Road** – Marlborough Ltd

**Project Manager** – Rob Venables/Phil Cowland



### Latest Achievements:

#### *Tindal Square*

The following has been accomplished since the last update:

- Restoration of the Judge Tindal Statue has been completed.
- Installation of the tree root structural system is underway. Our Parks Team have also selected the trees that will be planted after the works have completed.
- The re-paving of the High Street in the central area up to Crown Passage is progressing well.
- Excavation of the areas for the underground drainage access chambers in the northern part of the High Street (outside HSBC).
- Installation of a carrier pipe to connect the underground access chamber to the storm water drainage tank.
- The post-box outside Natwest on the High Street has now been decommissioned (this will be relocated once works are complete). The nearest alternative post-box is within WH Smiths.
- Safely managed two unexpected gas leaks, which were caused by an old redundant uncharted gas pipe. Investigations shows that the pipe had become corroded over time which had caused it to break under its own weight. The incidents were dealt with very quickly and efficiently by the onsite team.





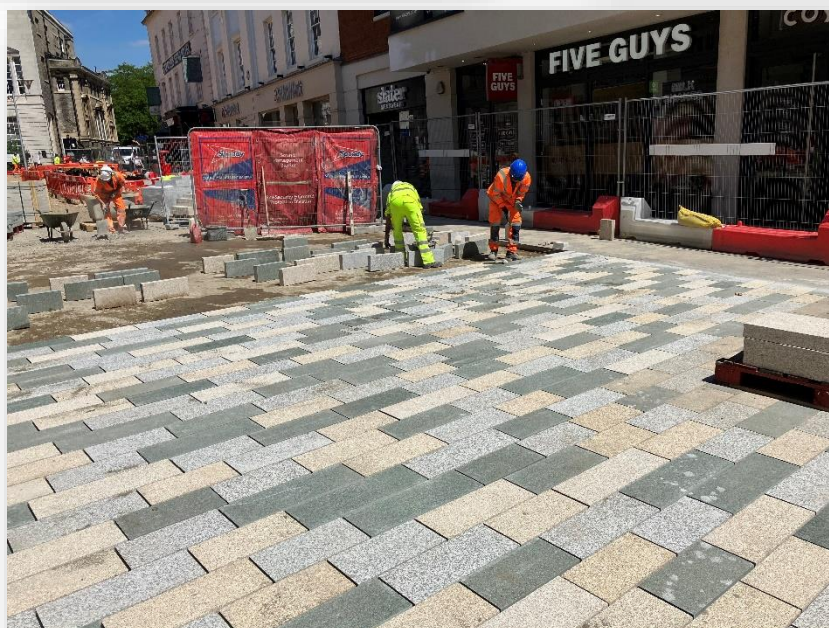
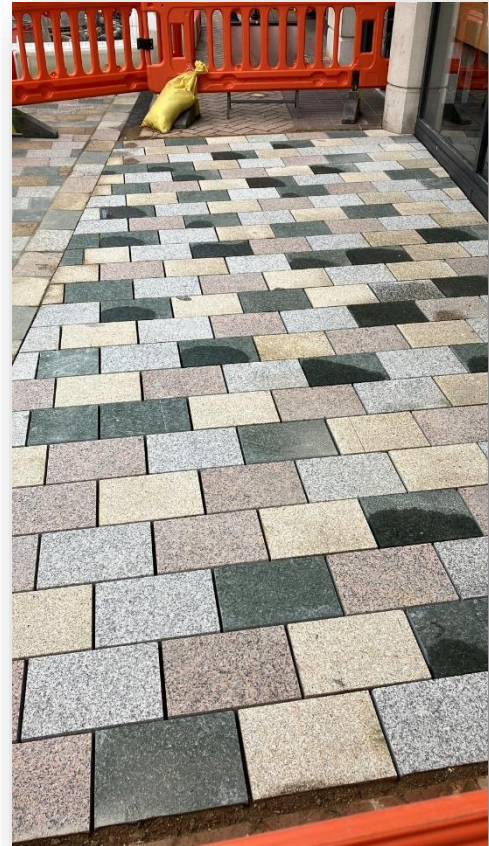
# Tindal Square and Market Road Project Update



Transforming Tindal Square:  
Public Realm Improvements

Bulletin No. 10

24<sup>th</sup> June 2022





# Tindal Square and Market Road Project Update



**Bulletin No. 10**

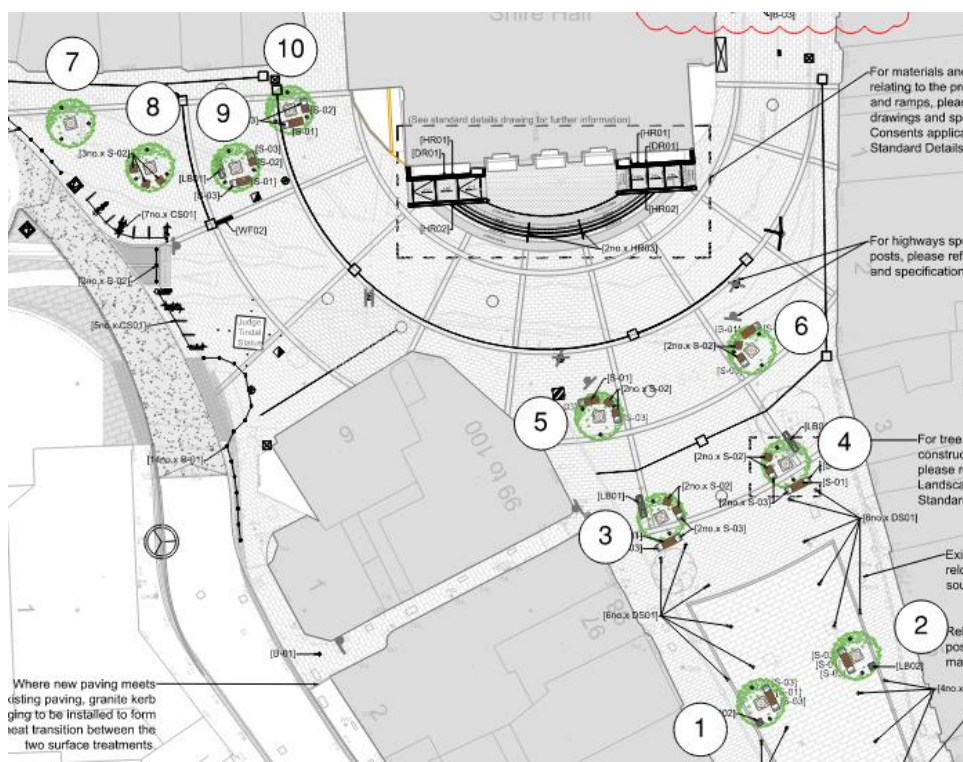
**24<sup>th</sup> June 2022**

## Next steps:

### *Tindal Square*

Over the next two weeks we will:

- Continue to install the tree pits for trees three and four (as labelled in diagram below).
- Completing the paving for the central frame and business entrances near to Crown Passage.
- Continuing the investigation into the underlying utilities found during trial hole excavations for the tree pits as these affect where the tree sits. Doing this will achieve the desired landscape aesthetic in this location as the trees have to look balanced.
- Continuing to excavate and install the underground drainage access chambers in the Shire Hall area and outside HSBC.
- The closed post-box will be removed and securely stored ready for relocation when the works are complete.
- Disconnect the existing electrical supplies of lighting and security bollards.
- Begin the installation of utility chambers for lighting and power supplies in the ground of the High Street.





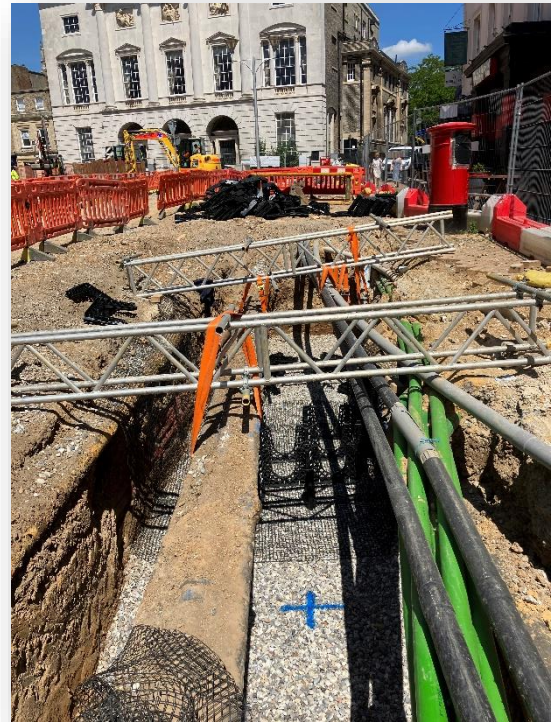
# Tindal Square and Market Road Project Update



Transforming Tindal Square:  
Public Realm Improvements

Bulletin No. 10

24<sup>th</sup> June 2022





# Tindal Square and Market Road Project Update



Transforming Tindal Square:  
Public Realm Improvements

## Bulletin No. 10

24<sup>th</sup> June 2022

### *Tindal Square*

#### *The selection of trees*

You may have noticed the installation of the new tree pits recently in the High Street, however many may ask how we decide which species of tree to plant.

In consultation with our Parks Team, we have selected four *Metasequoia glyptostroboides* (also known as Dawn Redwood) trees and six *Liquidambar styraciflua* (sweetgum) trees to plant as part of the improvement works being undertaken to Tindal Square. The trees will be planted by our Parks Team in autumn 2022 as the final phase of the works and then maintained thereafter.

The choice of species is influenced by the environment where the trees will be planted. As the city centre is an urbanised environment, we needed to ensure that the species of trees chosen are resilient to heat and dry conditions (urbanised areas are generally hotter than out of town), air pollution and intensive use due to the nature of town centre. Both tree species have also been successfully planted and established within the wider town centre, thus corroborating the selected tree species choice as suitable for the location.

We also looked at the spatial requirements, growing shape, interest and appearance of suitable species, for example upright trees species for the high street area between the Half Moon Square and Tindal Square; and trees with a rounder shaped crown and autumn colour for Tindal Square itself.

From this, the *Metasequoia* and *Liquidambar* were chosen, and after a visit to the nursery last week, the trees were selected that will be planted during the planting season.





# Tindal Square and Market Road Project Update



Transforming Tindal Square:  
Public Realm Improvements

**Bulletin No. 10**

**24<sup>th</sup> June 2022**





# Tindal Square and Market Road Project Update



Transforming Tindal Square:  
Public Realm Improvements

**Bulletin No. 10**

**24<sup>th</sup> June 2022**

## ***Tindal Square – Safe walking routes***

The diagram below shows the safe walking routes over the next fortnight whilst the works to the central and northwest parts of the work area are completed.



**For further information regarding the project please visit:**

[www.essexhighways.org/tindal-square](http://www.essexhighways.org/tindal-square)

**For general enquiries please email: [tindalsquare@chelmsford.gov.uk](mailto:tindalsquare@chelmsford.gov.uk)**