

Open Space Addendum 2018



Chelmsford
City Council

Open Space Addendum 2018

This document is an addendum to the City Council's published Open Space Assessment 2016. It sets out a number of sites which have been amended since the publication of the Assessment. Previous changes made to open spaces following the Local Plan Preferred Options Consultation were set out in an Open Space Addendum 2017.

These sites have generally been identified as requiring amendment for one or more of the following reasons:

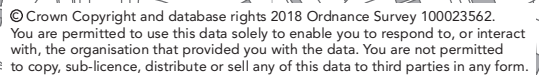
- A new site has been identified as falling within one of the categories of Open Space
- A site has changed its status/use since it was last assessed
- There was an error in the sites previous publication which was picked up as part of the Regulation 19 Pre-Submission Local Plan consultation (for example the type of open space or area was incorrect)

The table below sets out the areas of space to which changes have been made, the reasons for the change and what action has been taken in respect of the site. The column 'Map reference number' refers to the list of maps in this document. These maps show the extent of the amendments made in respect of each site identified.

It should be noted that all other sites and the information in the Open Space Assessment remains unchanged.

Open Space Reference Number	Reason for changes	Action/Decision	Map reference number
646	White space between employment area and open space.	Parts of site amended in accordance with map	15 – Chelmer Village
979	Open space no longer all within an existing education establishment. Area outside education establishment to be shown as open space.	Open space notation shown in accordance with map	16 – St Peters College, Fox Crescent
201	Identified as part of Local Plan consultation.	Site extended in accordance with map	17 – East of Coulde Dennis
1121	Included in assessment for Golf but missing from maps.	Open space notation shown in accordance with map	18 – Little Channels Golf Course

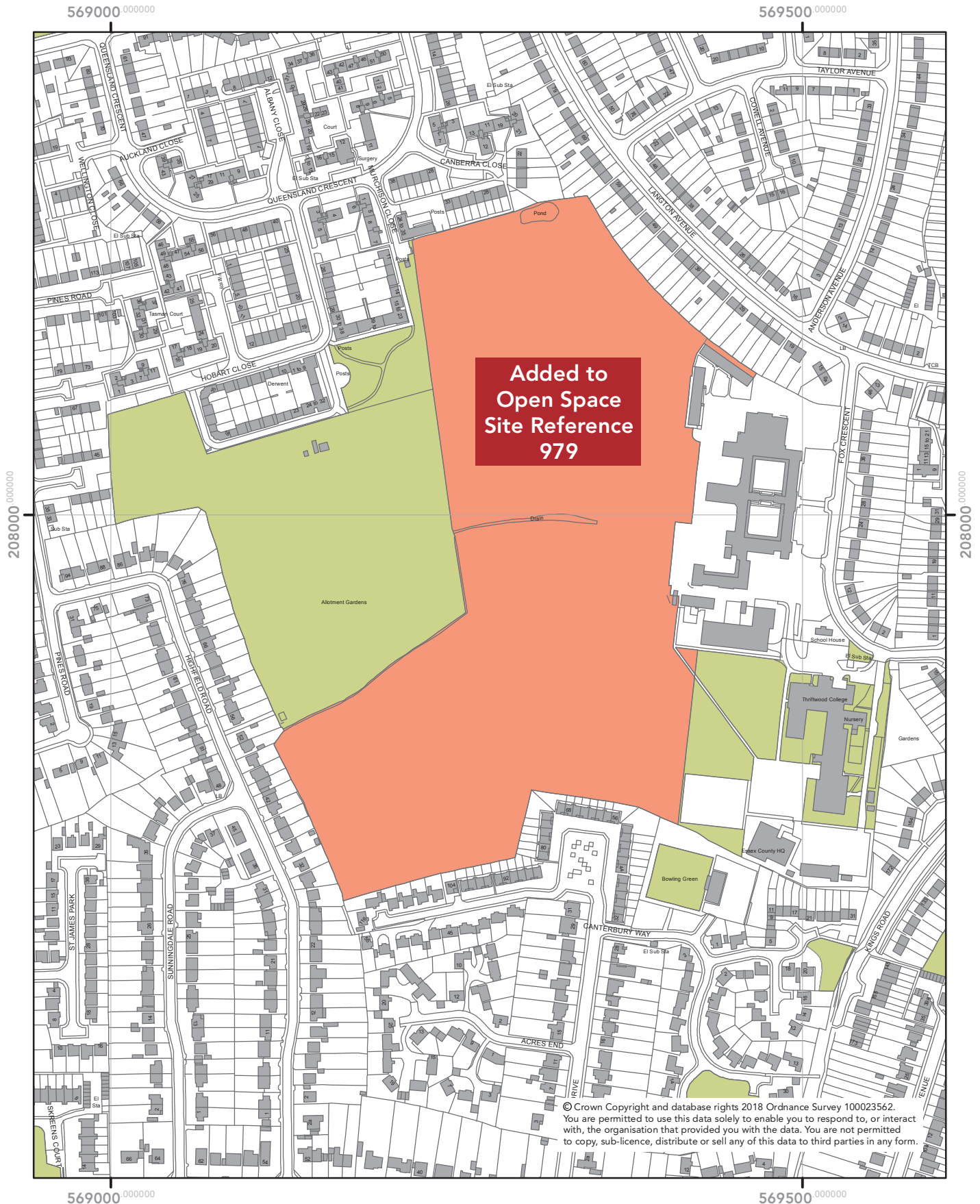
15



Amendments to Open Space

St. Peter's College, Fox Crescent, Chelmsford

16



0 50 100 Metres

MAY 2018

Planning and Housing Policy
Directorate for Sustainable
Communities

Chelmsford City Council
Civic Centre, Duke Street,
Chelmsford, CM1 1JE

01245 606330
planning.policy@chelmsford.gov.uk
www.chelmsford.gov.uk



Amendments to Open Space

East of Coude Dennis, East Hanningfield

17



0 10 20 Metres

MAY 2018

**Planning and Housing Policy
Directorate for Sustainable
Communities**

Chelmsford City Council
Civic Centre, Duke Street,
Chelmsford, CM1 1JE

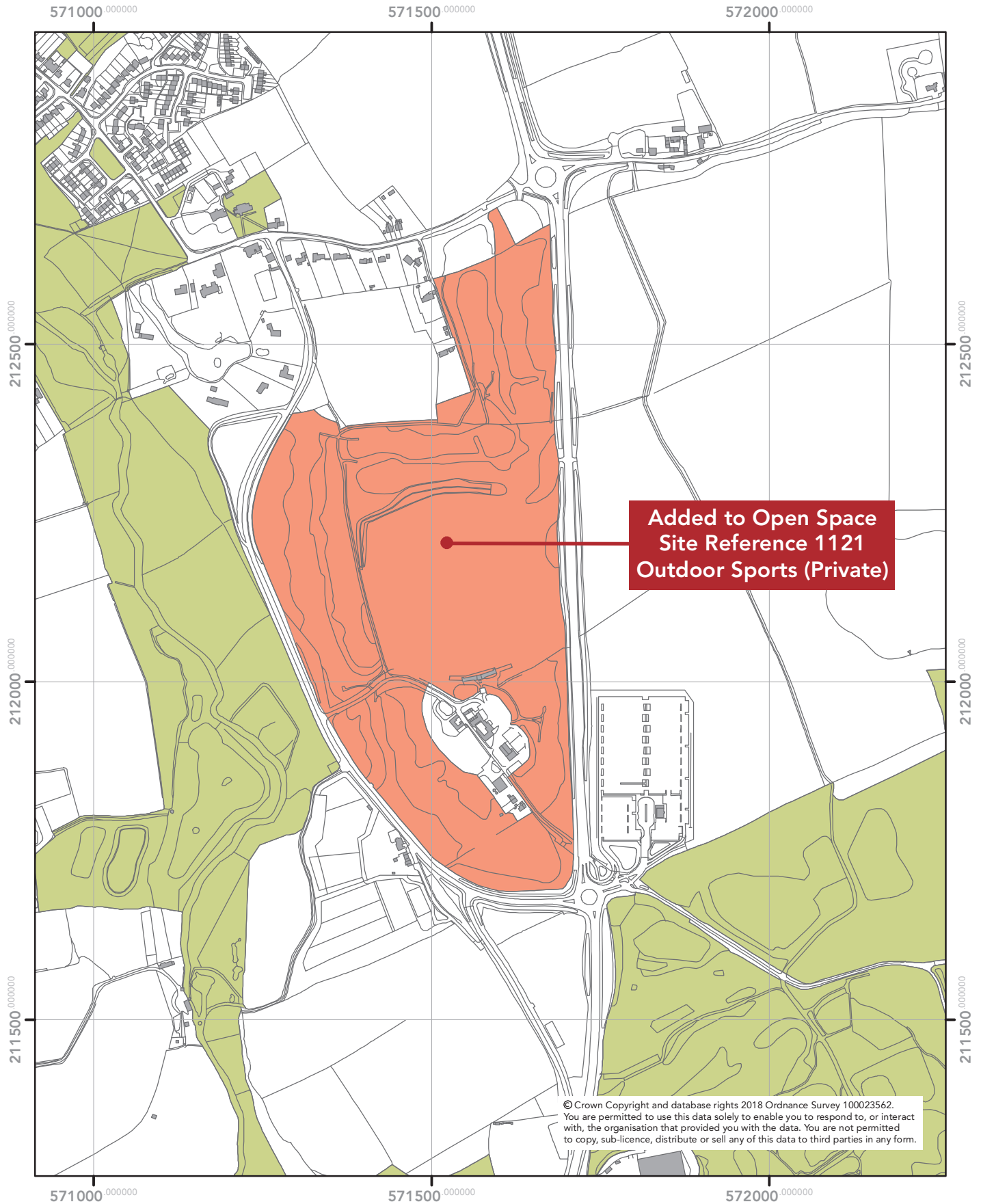
01245 606330
planning.policy@chelmsford.gov.uk
www.chelmsford.gov.uk



Amendments to Open Space

Little Channels Golf Course, Little Waltham

18



0 125 250 Metres

MAY 2018

**Planning and Housing Policy
Directorate for Sustainable
Communities**

Chelmsford City Council
Civic Centre, Duke Street,
Chelmsford, CM1 1JE

01245 606330
planning.policy@chelmsford.gov.uk
www.chelmsford.gov.uk





This publication is available in alternative formats including large print, audio and other languages

Please call 01245 606330

Planning and Housing Policy
Directorate for Sustainable Communities
Chelmsford City Council
Civic Centre
Duke Street
Chelmsford
Essex
CM1 1JE

Telephone 01245 606330
planning.policy@chelmsford.gov.uk
www.chelmsford.gov.uk

Document published by
Planning and Housing Policy
© Copyright Chelmsford City Council



Chelmsford
City Council