

# Open Space Addendum 2017



**Chelmsford**  
City Council



### Open Space Addendum 2017

This document is an addendum to the City Council's published Open Space Assessment 2016. It sets out a number of sites which have been amended since the publication of the Assessment.

These sites have generally been identified as requiring amendment for one or more of the following reasons:

- A new site has been identified as falling within one of the categories of Open Space
- A site has changed its status/use since it was last assessed
- There was an error in the sites previous publication which was picked up as part of the Preferred Options Local Plan consultation (for example the type of open space or area was incorrect)

The table below sets out the areas of space to which changes have been made, the reasons for the change and what action has been taken in respect of the site. The column 'Map reference number' refers to the list of maps in this document. These maps show the extent of the amendments made in respect of each site identified.

It should be noted that all other sites and the information in the Open Space Assessment remains unchanged.

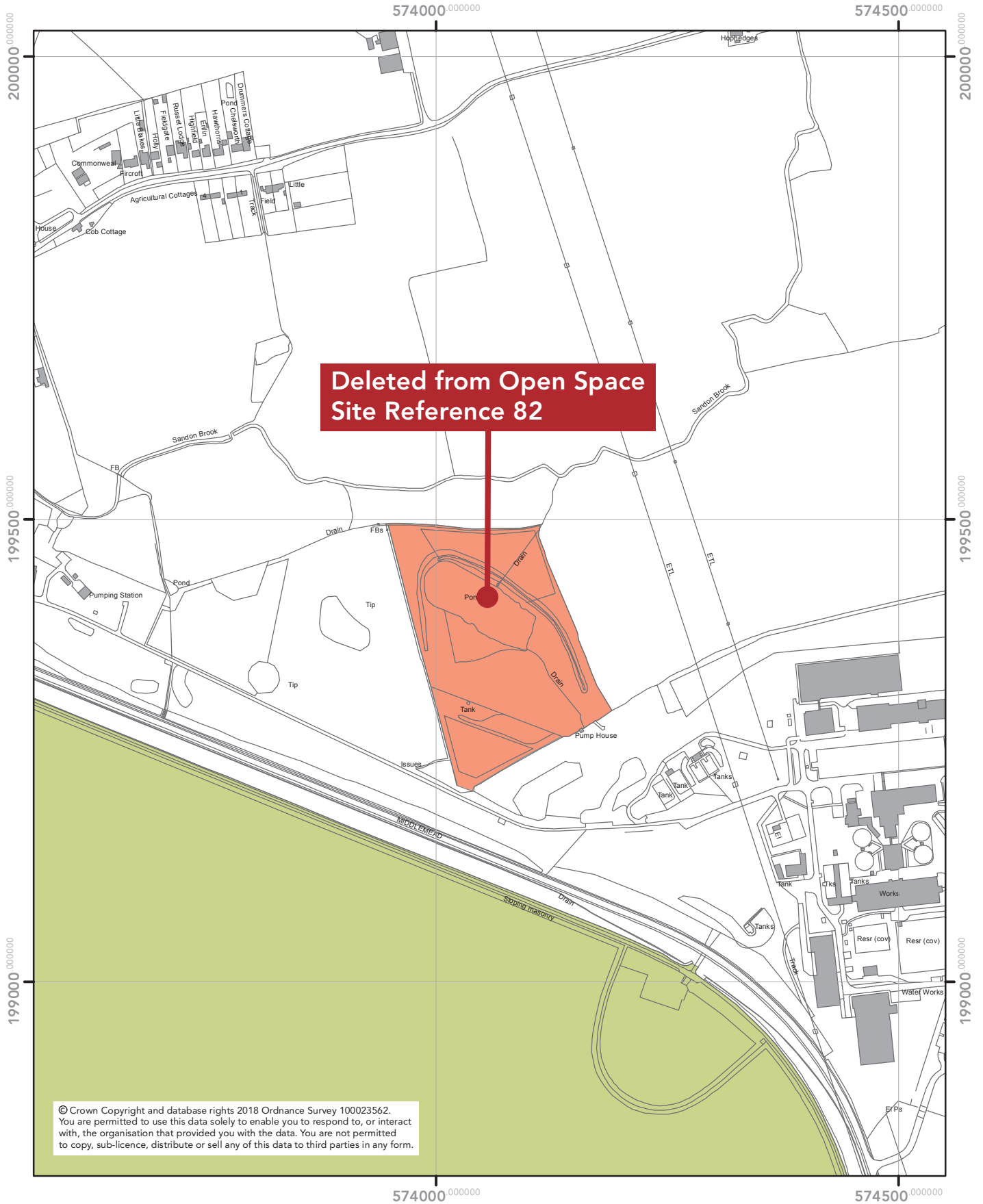
Open Space Reference Number	Reason for changes	Action/Decision	Map reference number
82	Site is part of the water company and is private with no access due to health and safety reasons.	Site removed in accordance with map	1 – West Hanningfield
169	Identified during master planning for adjacent Primary School Playing field.	Site extended in accordance with map	2 – Great Baddow
197	Part of site is a garage block and not allotments.	Part of site removed in accordance with map	3 - Sandon
511	Site is in private ownership with no public access. Used for other purposes.	Site removed in accordance with map	4 – Roxwell
559	Land within current Beaulieu development needs to be removed. Golf course to remain as open space. Other part of site in private ownership and not part of golf course.	Parts of site removed in accordance with map	5 - Channels

577	Site no longer a piece of Open Space. No evidence of such use for a sustained period.	Site removed in accordance with map	6 – Howe Street
646	Part of site has a nursery built on it.	Part of site removed in accordance with map	7 – Chelmer Village
647	Arable fields with no public access.	Removed site in accordance with map	8 – Brookend Water Treatment Works
648	Arable fields with no public access.	Removed site in accordance with map	9 – Brook End Road
947	The land has limited access.	Whole of site re-classified as 'natural green space (limited access)'	10 – Little Waltham
1027	Part of site has no public access.	Part of site removed in accordance with map	11 – Police Headquarters
1119	New site in public use identified during site visit.	New site added in accordance with map	12 – Howe Street
1120	Public use of site identified as part of planning application pre-enquiry.	New site added in accordance with map	13 – South Woodham Ferrers
558	Part of site has consent for residential development.	Part of site removed in accordance with map	14 – Belsteads Farm Lake

# Amendments to Open Space

## West Hanningfield

1



0 100 200 Metres

NOVEMBER 2017

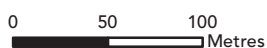
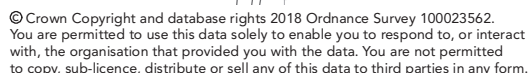
**Planning and Housing Policy  
Directorate for Sustainable  
Communities**

Chelmsford City Council  
Civic Centre, Duke Street,  
Chelmsford, CM1 1JE

01245 606330  
planning.policy@chelmsford.gov.uk  
www.chelmsford.gov.uk



## 2



**Planning and Housing Policy  
Directorate for Sustainable  
Communities**

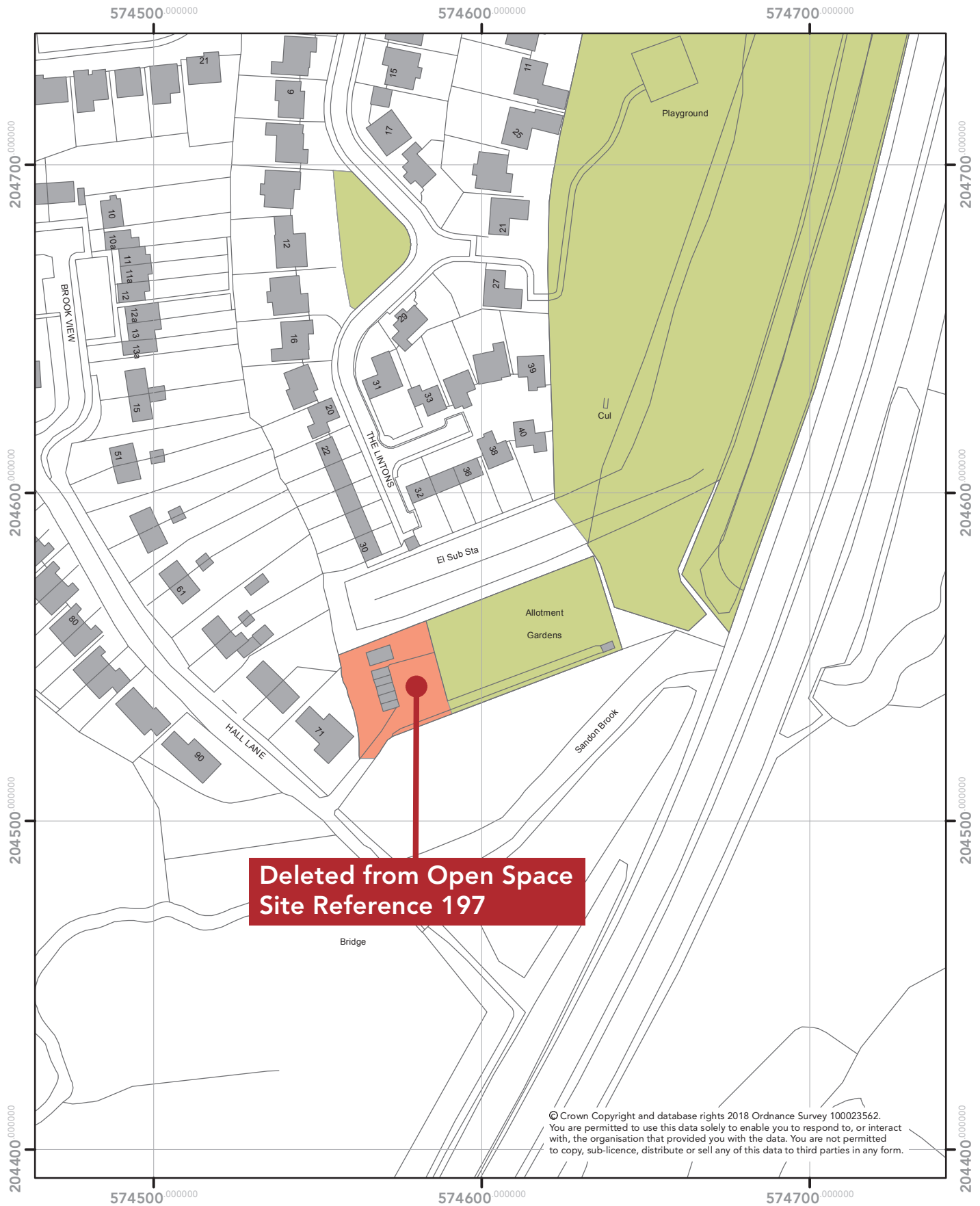
01245 606330  
planning.policy@chelmsford.gov.uk  
www.chelmsford.gov.uk



# Amendments to Open Space

## Sandon

3



0 25 50 Metres

NOVEMBER 2017

**Planning and Housing Policy  
Directorate for Sustainable  
Communities**

Chelmsford City Council  
Civic Centre, Duke Street,  
Chelmsford, CM1 1JE

01245 606330  
planning.policy@chelmsford.gov.uk  
www.chelmsford.gov.uk



# Amendments to Open Space

## Roxwell

4



0 50 100 Metres

NOVEMBER 2017

**Planning and Housing Policy  
Directorate for Sustainable  
Communities**

Chelmsford City Council  
Civic Centre, Duke Street,  
Chelmsford, CM1 1JE

01245 606330  
planning.policy@chelmsford.gov.uk  
www.chelmsford.gov.uk





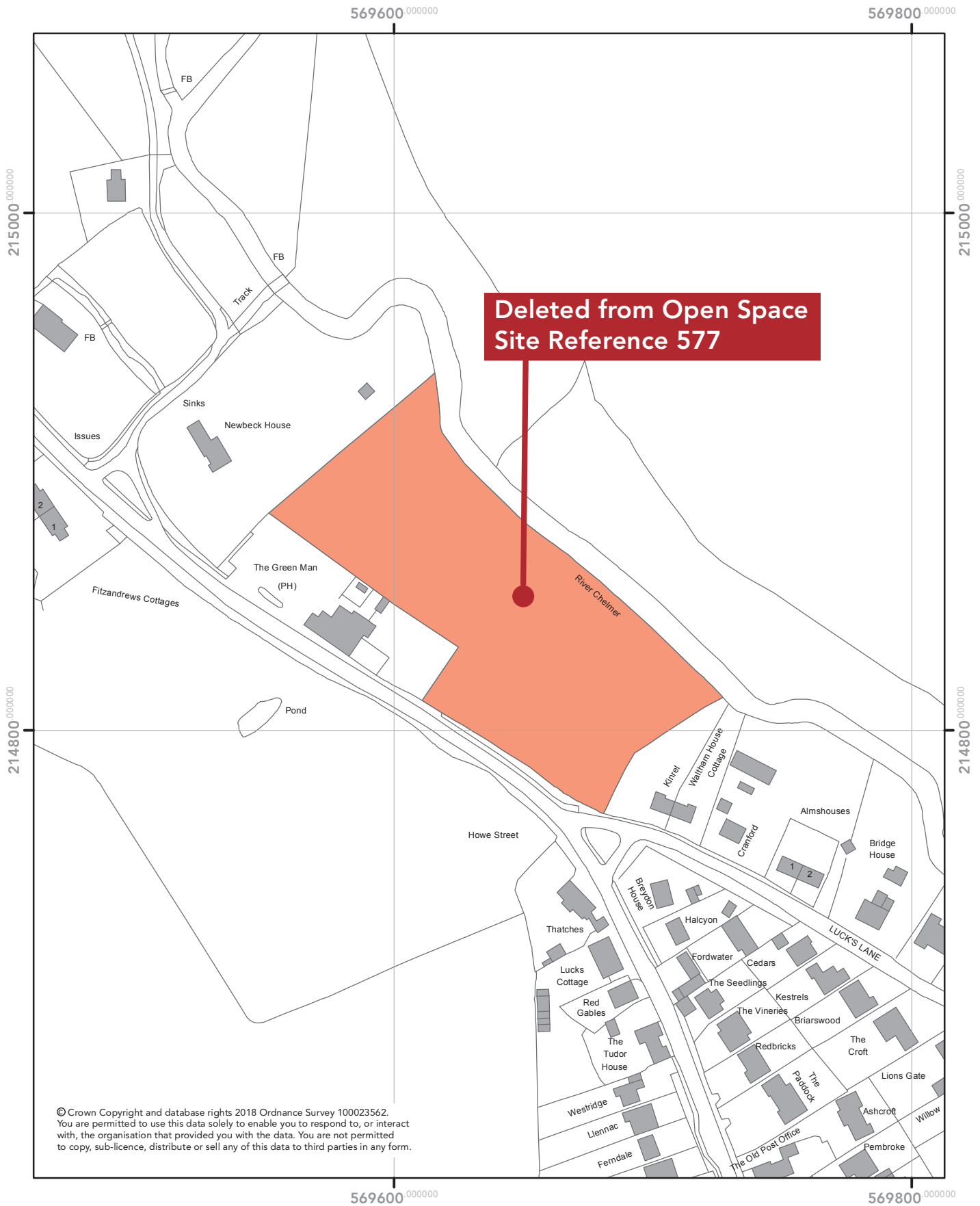
## 5



# Amendments to Open Space

## Howe Street

6



0 25 50 Metres

NOVEMBER 2017

**Planning and Housing Policy  
Directorate for Sustainable  
Communities**

Chelmsford City Council  
Civic Centre, Duke Street,  
Chelmsford, CM1 1JE

01245 606330  
planning.policy@chelmsford.gov.uk  
www.chelmsford.gov.uk



7

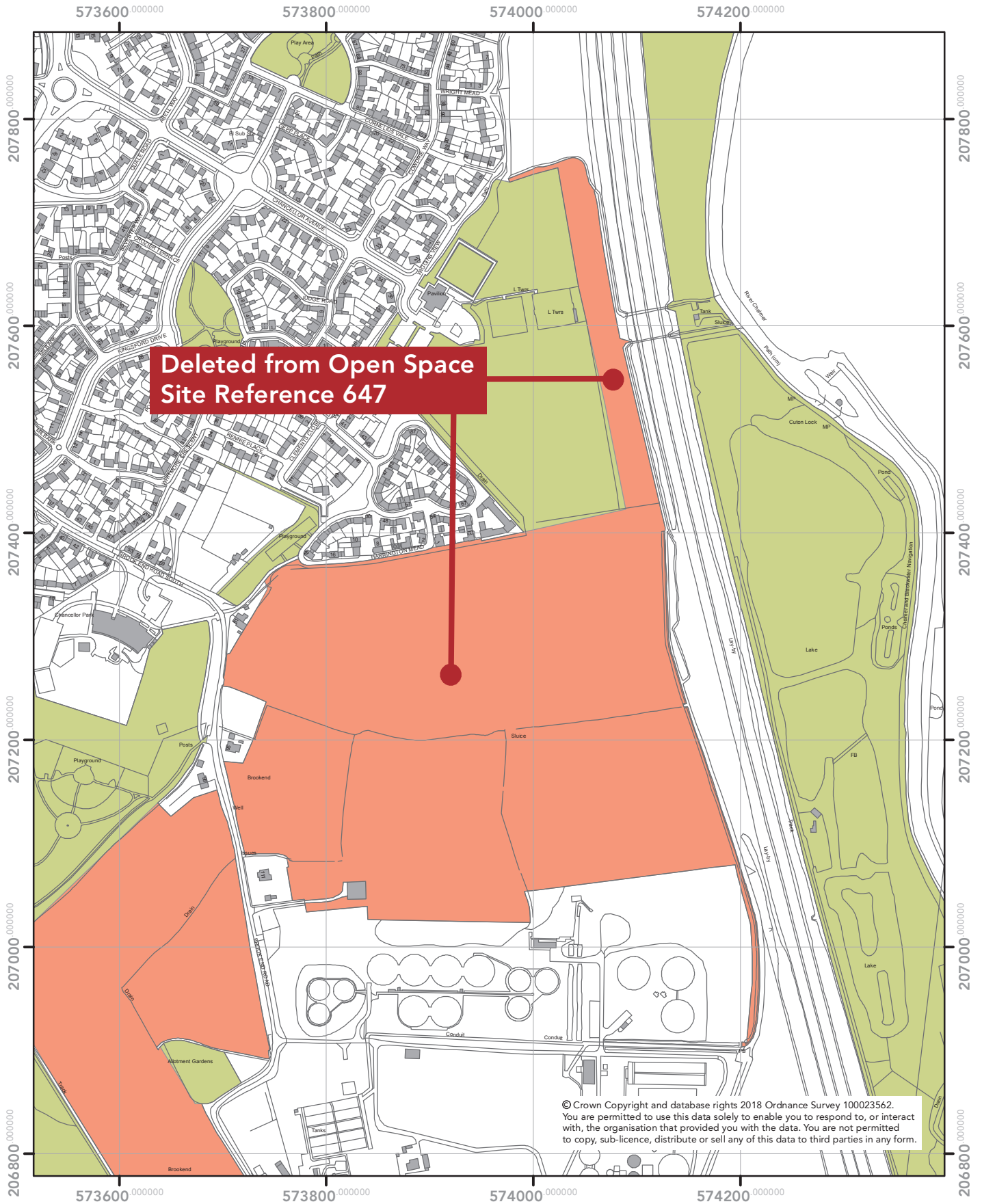




# Amendments to Open Space

## Brookend Water Treatment Works

8



0 50 100 Metres

NOVEMBER 2017

**Planning and Housing Policy  
Directorate for Sustainable  
Communities**

Chelmsford City Council  
Civic Centre, Duke Street,  
Chelmsford, CM1 1JE

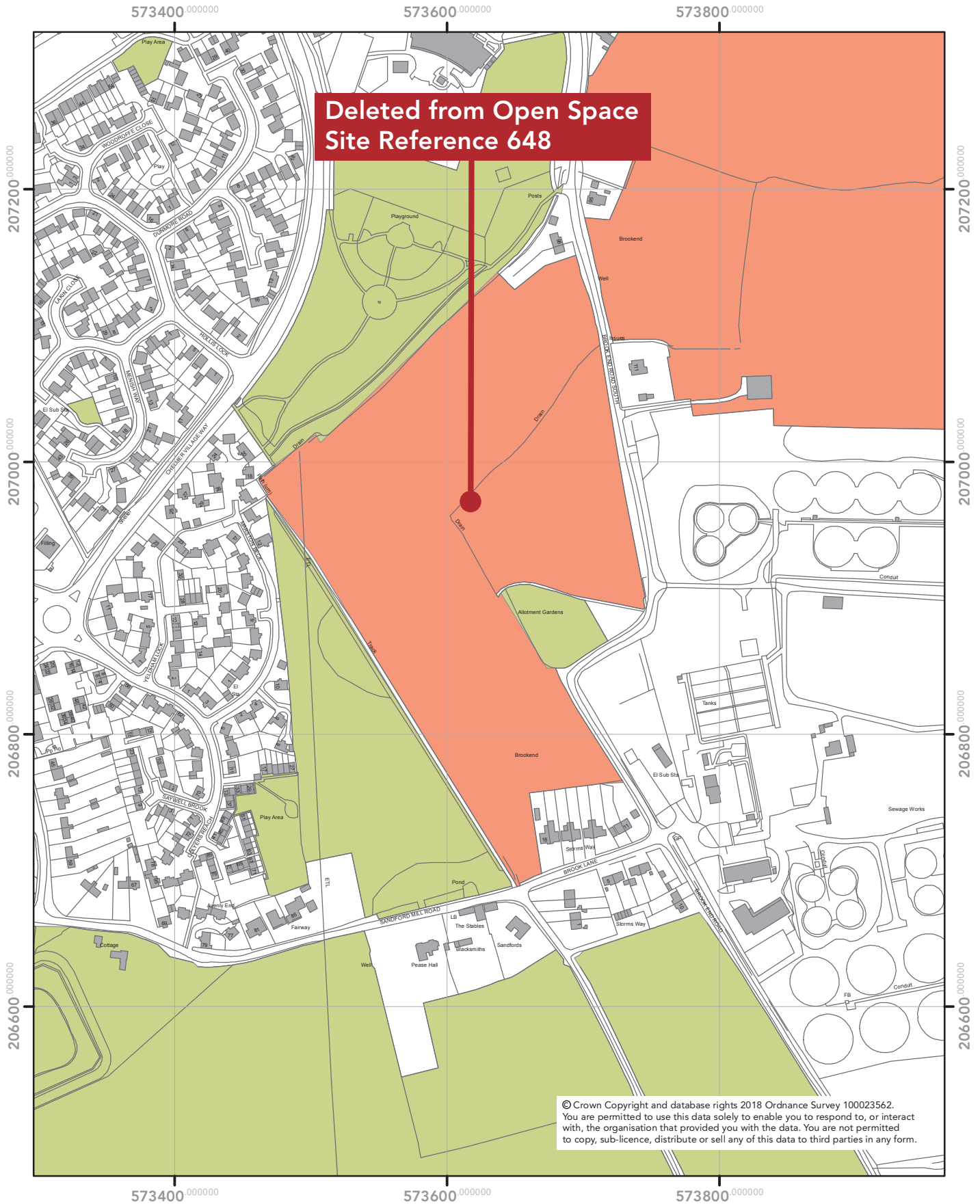
01245 606330  
planning.policy@chelmsford.gov.uk  
www.chelmsford.gov.uk



# Amendments to Open Space

## Brook End Road

9



0 50 100 Metres

NOVEMBER 2017

**Planning and Housing Policy  
Directorate for Sustainable  
Communities**

Chelmsford City Council  
Civic Centre, Duke Street,  
Chelmsford, CM1 1JE

01245 606330  
planning.policy@chelmsford.gov.uk  
www.chelmsford.gov.uk

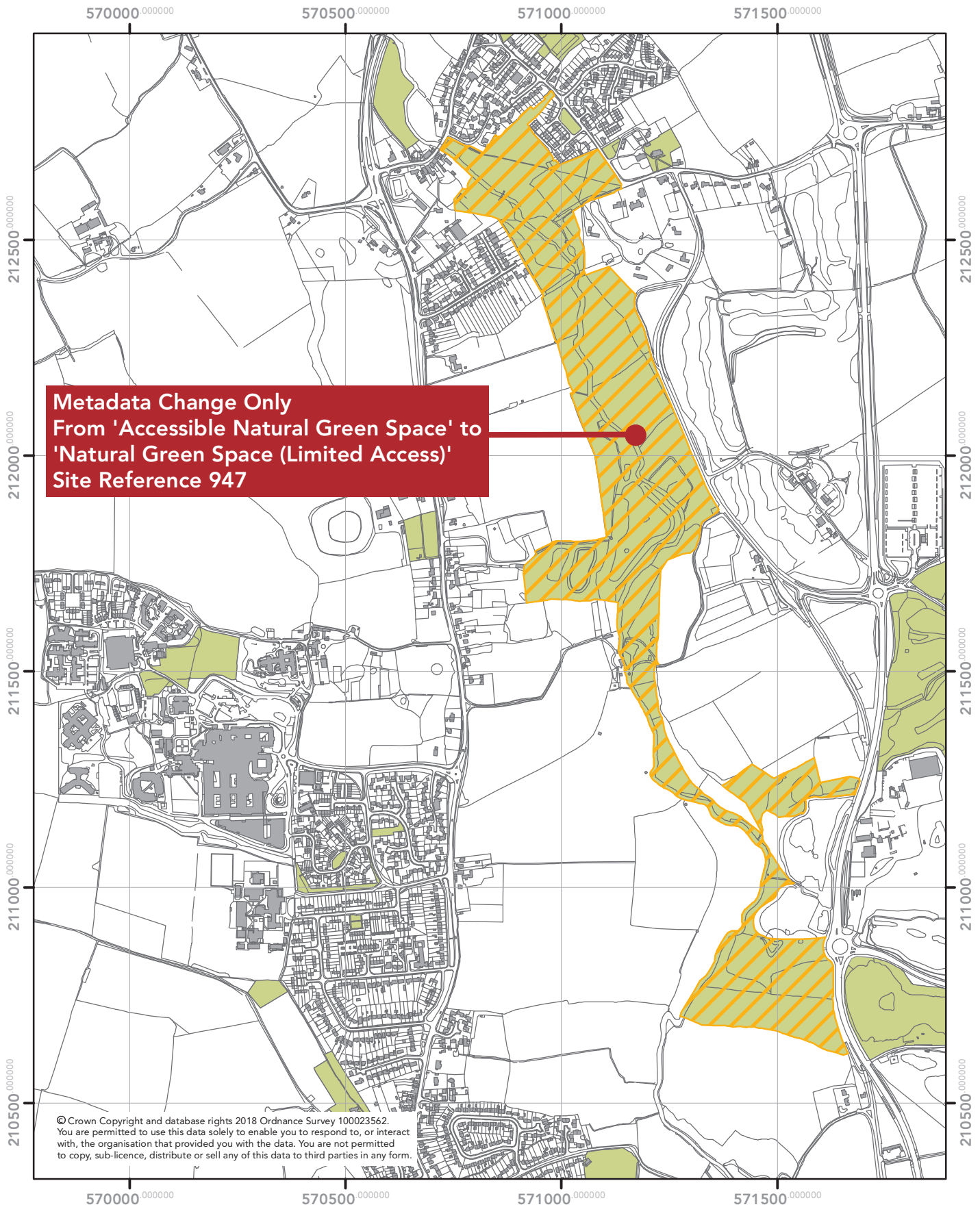




# Amendments to Open Space

## Little Waltham

10



0 100 200  
Metres

NOVEMBER 2017

**Planning and Housing Policy**  
**Directorate for Sustainable**  
**Communities**

Chelmsford City Council  
 Civic Centre, Duke Street,  
 Chelmsford, CM1 1JE

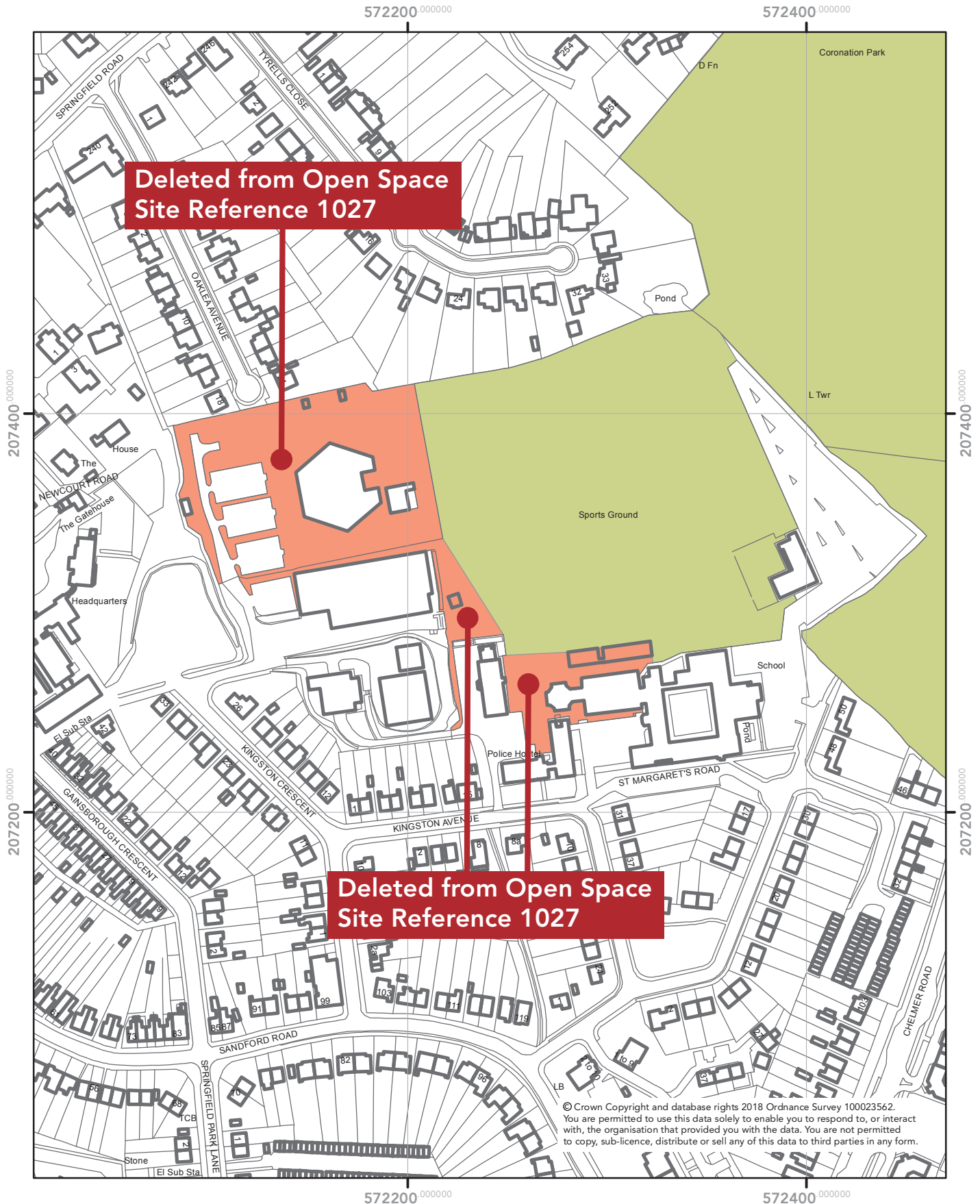
01245 606330  
[planning.policy@chelmsford.gov.uk](mailto:planning.policy@chelmsford.gov.uk)  
[www.chelmsford.gov.uk](http://www.chelmsford.gov.uk)



# Amendments to Open Space

## Police Headquarters

11



0 50 100 Metres

NOVEMBER 2017

Planning and Housing Policy  
Directorate for Sustainable  
Communities

Chelmsford City Council  
Civic Centre, Duke Street,  
Chelmsford, CM1 1JE

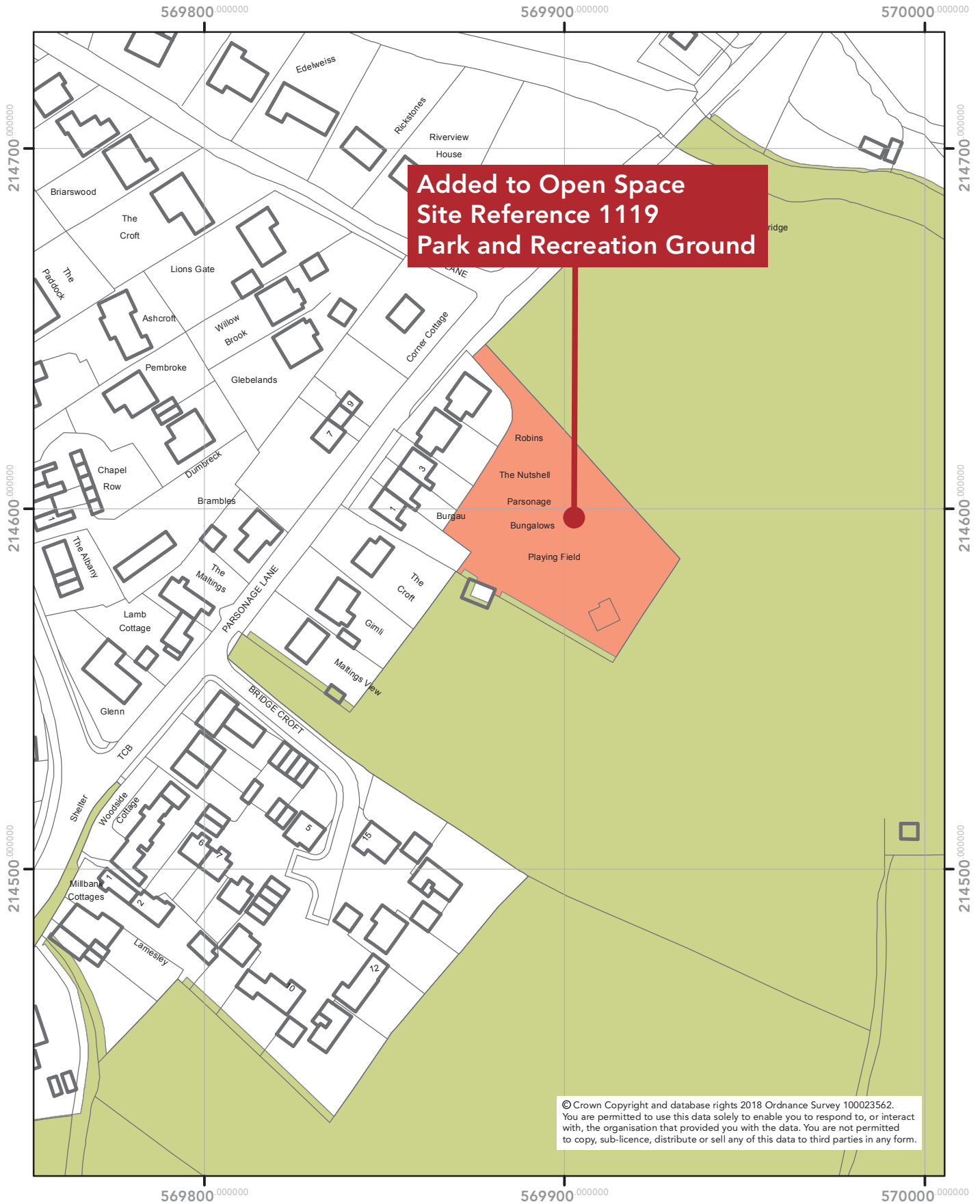
01245 606330  
planning.policy@chelmsford.gov.uk  
www.chelmsford.gov.uk



# Amendments to Open Space

## Howe Street

12



© Crown Copyright and database rights 2018 Ordnance Survey 100023562.  
You are permitted to use this data solely to enable you to respond to, or interact with, the organisation that provided you with the data. You are not permitted to copy, sub-licence, distribute or sell any of this data to third parties in any form.



0 25 50 Metres

NOVEMBER 2017

**Planning and Housing Policy  
Directorate for Sustainable  
Communities**

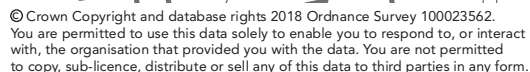
Chelmsford City Council  
Civic Centre, Duke Street,  
Chelmsford, CM1 1JE

01245 606330  
planning.policy@chelmsford.gov.uk  
www.chelmsford.gov.uk

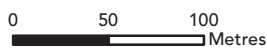
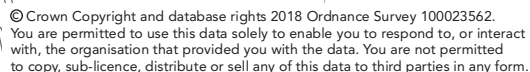




## 13



## 14







This publication is available in alternative formats including large print, audio and other languages

Please call 01245 606330

Planning and Housing Policy  
Directorate for Sustainable Communities  
Chelmsford City Council  
Civic Centre  
Duke Street  
Chelmsford  
Essex  
CM1 1JE

Telephone 01245 606330  
[planning.policy@chelmsford.gov.uk](mailto:planning.policy@chelmsford.gov.uk)  
[www.chelmsford.gov.uk](http://www.chelmsford.gov.uk)

Document published by  
Planning and Housing Policy  
© Copyright Chelmsford City Council



**Chelmsford**  
City Council