



Chelmsford to Writtle Medium 4.3 miles

You can start the route at any point on the map!



Cross and ride with care as you cycle onto Lodge Road.

Ride with caution as you travel through the underpass to Hylands Park.

Key

I Spy

Selfie Spot

Pit Stop

Visit Stop

PING Table

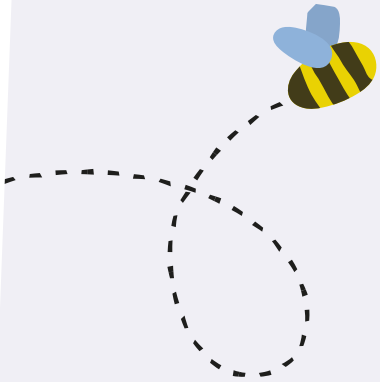
Visit Stop Route

Cycle Route

Cycle Route Designated Cycle Path

I Spy

- 1 On the information plaque in Admirals park can you find out when Writtle Lodge was built?
- 2 As you follow the cycle route to Writtle you will notice Old Chelmsfordian's Sports ground. What three sports can be played here?
- 3 On the blue bike and walking information signpost along the path behind the Old Chelmsfordian Sports ground how many minutes does it take to reach Hylands park?
- 4 As you travel towards St Johns Green Road you will find a commemorative plaque on the path to Writtle what does the plaque commemorate?



Selfie Spot

Can you take a selfie on the bridleway approach on Lawford Lane.



Pit Stop

Extra challenge visit www.abct.org.uk to find out more about Writtle Airfield.



Family Stop

As a family can you have a picnic at Hylands Park?



Share your photos and adventures with us [#explorechelmsford](https://twitter.com/explorechelmsford)



Please submit your answers to csaw@chelmsford.gov.uk to enter the prize giveaway and prize draw.
T&C's apply please see website for more information.
www.chelmsford.gov.uk/explore