

# Community | PLAN



CHELMSFORD  
PARTNERSHIP

One Vision: Chelmsford Tomorrow

Chelmsford Tomorrow 2021

Foreword

Welcome to ‘Chelmsford Tomorrow 2021’, our Community Plan for the area. This is an exciting time for Chelmsford. It is already a great place to live and work. We have a unique opportunity to make it even better and create a place for the 21st century, to the benefit of all our residents and businesses.

Work is already underway to harness these exciting opportunities, through delivery of the strategies and policies contained within the Council’s Local Development Framework. This sets out the future scale, pattern and quality of development for Chelmsford in relation to jobs, housing, schools, transport and other factors that are of vital importance to residents’ quality of life.

Chelmsford Tomorrow 2021 builds on the priorities in the previous Community Plan and the Local Development Framework. Bringing the Community Plan and the Local Development Framework together gives the Chelmsford Partnership the opportunity to create a stronger, integrated approach to the people and the place.

The Community Plan provides a framework, priorities and actions for organisations working in partnership and has been developed by all partners. It is focused on the issues and concerns of local people and concentrates on achieving the things that we cannot achieve in isolation. Alongside the new Plan, the Chelmsford Partnership has recently introduced improved arrangements to ensure it is better equipped to deliver the priorities and outcomes in the Plan.

Success in doing so will mean an improved quality of life for residents now, and for the future, for Chelmsford Tomorrow.



**Steve Packham**  
Chairman of Chelmsford Partnership



**Ken Edwards**  
Vice Chairman of Chelmsford Partnership

April 2008

April 2008

CHELMSFORD

PARTNERSHIP

One Vision: Chelmsford Tomorrow

Contents

|  |    |
|--|----|
| <b>Foreword</b>                            | 2  |
| <b>Introduction</b>                        |    |
| Our Vision                                 | 3  |
| An Integrated Approach:                    |    |
| The Community Plan and the LDF             | 4  |
| Working with Partners                      | 6  |
| Delivering Our Vision                      | 6  |
| Summary of Community Plan Themes           | 7  |
| Cross-cutting Issues                       | 7  |
| <b>Context</b>                             |    |
| Our Borough                                | 8  |
| Our People                                 | 14 |
| <b>Community Plan Themes</b>               |    |
| Our Community is Healthy and Active        | 15 |
| Our Community is Socially Inclusive        | 16 |
| Our Community is Thriving                  | 17 |
| Our Community is Nurturing the Environment | 18 |
| Our Community is Well Connected            | 18 |
| <b>Delivering the Community Plan</b>       |    |
| About Chelmsford Partnership               | 20 |
| Action Plans                               | 22 |
| Measuring our success:                     |    |
| The Local Area Agreement                   | 22 |



## Our Vision

Our long term vision is for Chelmsford to become the economic, cultural, leisure and retail heart of Essex and a leading regional centre in the East of England. It is a vision for the future of the Borough and its people – for Chelmsford Tomorrow.

We want to make a great place even better, where people choose to live, work and visit because of the ever improving quality of life available now, and in the future.

Chelmsford has significant growth opportunities, including the creation of 20,000 new jobs and 14,000 new homes. We will need major infrastructure development to support this future growth, a priority identified by residents and partners in the consultation undertaken in preparing the Local Development Framework.

In response the Council and key partners, including the East of England Development Agency (EEDA), Essex County Council, the Environment Agency and Primary Care Trust, have come together to agree priorities and co-ordinate delivery of the necessary infrastructure. Significant progress has already been made, including a Growth Area Funding grant award of £11 million, awarded jointly with Braintree, and the development of mechanisms through planning that will attract substantial additional funding.



The key infrastructure requirements to support growth in the borough and to deliver our Chelmsford Tomorrow vision include, but are not limited to:

- Chelmsford North-East By-pass
- new railway station north-east of Chelmsford
- capacity improvements at Chelmsford Railway Station
- transport links between new neighbourhoods and Chelmsford Town Centre
- the encouragement of public transport use and sustainable transport measures and other transport improvements and measures in the locality or benefiting the development
- improvements to the Army & Navy junction
- Neighbourhood Centres in the new neighbourhoods including community, primary health care, retail and leisure facilities
- pre-school, primary, secondary and tertiary education provision to serve new and existing communities
- open space, recreational provision and public realm enhancements
- strategic flood defence measures to protect Chelmsford Town Centre
- additional Park and Ride sites to serve Chelmsford
- bus priority and rapid transit measures
- community facilities across the borough
- new homes, including affordable housing

It is a key objective of the Community Plan, the Local Development Framework and the overarching Chelmsford Tomorrow vision that new development achieves a broad range of economic, environmental and social objectives. We recognise that providing sustainable residential, commercial and infrastructure growth will contribute to improving the quality of life for our residents.

At the same time the Chelmsford Partnership is working to tackle the complex social issues affecting the area. By improving facilities and residents ability to benefit from them, we aim to ensure all the issues impacting on our residents' quality of life are addressed.



## Working with Partners

The aim of the Community Plan is to focus on the areas that require input from a range of partners, in order to achieve more than an individual organisation can on its own. We recognise that each of the partners has lead responsibility for many of the issues identified in the Plan, e.g. the Primary Care Trust for reducing obesity. It is about looking at how we join up services, how we fill the gaps that are created by organisations working in isolation and how we achieve something that would not have been achieved if the Chelmsford Partnership did not exist.

There are things that do not appear in this Plan. This does not mean they are not important to the people of Chelmsford, or are being ignored. They are not included either because they do not represent a significant problem, or they are being addressed through the activity of one of the partners and do not require additional input from other partners. Any new, emerging issues will be addressed through the annual review of the Community Plan.

## Delivering Our Vision

The Chelmsford Partnership has overall responsibility for delivering the Community Plan, through a number of groups responsible for specific action plans. These action plans will run for three years, after which they will be reviewed as part of the review of the entire Community Plan.

The Executive Group will monitor the action plans regularly to assess progress and ensure targets and outcomes are delivered.

## Summary of Community Plan Themes

The Partnership has identified five themes for the Plan, based on the results of consultation and the strategic needs assessment (developed by Mid Essex PCT and Essex County Council). Each theme is supported by a number of specific priorities, which are in turn reflected in action plans. The five themes are:

1. Our Community is Healthy and Active
2. Our Community is Socially Inclusive
3. Our Community is Thriving
4. Our Community is Nurturing the Environment
5. Our Community is Well Connected

## Cross Cutting Themes

### Tackling Deprivation

Although relatively affluent, Chelmsford contains pockets of deprivation (see 'Our Borough' for evidence). Our commitment to improving the quality of life for residents in these areas is particularly important and needs imaginative, targeted and co-ordinated action from all partners. The approach to tackling deprivation in North West Chelmsford provides a good template for addressing deprivation in other areas. This will be set out in a mini Community Plan, with specific actions aimed at tackling deprivation, wherever it exists in the borough.

### Utilising Culture

Culture is integral in supporting a variety of priorities, for example, crime reduction, tackling deprivation, and increasing skills and self esteem. Elements of how we utilise culture to improve quality of life are therefore interwoven into the action plans. Those representing the cultural sector will provide valuable input at Chelmsford Partnership steering group meetings and events.

### Embracing Equality and Celebrating Diversity

All organisations working in the borough are committed to ensuring that everyone has fair and equal access to the services they provide. All organisations are committed to removing barriers (both physical and social) to accessing their services so that everyone can look forward to a positive customer experience. Our aim is to treat people as individuals and have understanding and respect for their needs.

### Valuing Young People

Although the agenda for young people is delivered by a statutory partnership (Children and Young Persons Strategic Partnership or CYPSP), it is important for us to consider young people under each of the other themes. Where added value can be identified under any of the themes this will be written into specific action plans. Our aim is that children, young people, their families and those who support them are encouraged to be healthy and active, stay safe, enjoy and achieve, make a positive contribution and achieve economic well being.

### Valuing Older People

Where added value can be identified in terms of delivering the agenda for older people, this will be written into specific action plans. Our aim is that older people, their families and those who support them are encouraged to be healthy and active, stay safe, enjoy and achieve, make a positive contribution and achieve economic well being.

Our Borough



1. Bicknacre and East and West Hanningfield
2. Boreham and the Leighs
3. Broomfield and the Walthams
4. Chelmer Village and Beaulieu Park
5. Chelmsford Rural West
6. Galleywood
7. Goat Hall
8. Great Baddow East
9. Great Baddow West
10. Little Baddow, Danbury and Sandon
11. Marconi
12. Moulsham and Central
13. Moulsham Lodge
14. Patching Hall
15. Rettendon and Runwell
16. St Andrews
17. South Hanningfield, Stock and Margaretting
18. South Woodham - Chetwood and Collingwood
19. South Woodham - Elmwood and Woodville
20. Springfield North
21. The Lawns
22. Trinity
23. Waterhouse Farm
24. Writtle



This section has been developed in line with the Joint Strategic Needs Assessment produced by the Mid Essex Primary Care Trust and Essex County Council.

### Population

According to 2006 estimates, Chelmsford has a population of around 162,800, and projections made in 2002 suggested that the population is set to grow by 5% by 2022. Around 10% of the population live in the town of South Woodham Ferrers.

The over 55s accounted for 17% of the total population in 2001, which is set to rise by 17,000 by 2021. Less than 2% of retired residents are from a non-white ethnic background. Chelmsford is projected to experience an above average growth in the 75 and over age group (a 57% increase between 2006 and 2021 for those over the age of 85 years).

### Ethnicity

In 2001, Black and Minority Ethnic groups (BME) accounted for just over 3% of the population of the borough. The largest BME group in the borough is Asian or British Asian. Chelmsford's population has increased since 2001 and in keeping with the rest of the UK, it is likely that the borough's BME population has also grown.

### Migration

The percentage of local migrant registrations between 2004 and 2006 equated to 489, 50% of these were Polish with a significant number of Czechs and Slovaks (both 18%). Including migrant dependants the total rises to 537 representing 0.33% of the population (2005 estimate). Data regarding occupation is unclear, and it is not certain that these people will remain in the borough or even the UK.

### Deprivation

Although Chelmsford is considered affluent, there remain pockets of relative deprivation in a number of wards North West of the town centre. On the Index of Multiple Deprivation 2004 (IMD 2004) which examines income, employment, health and disability, education, housing and access to services, Marconi ward has one super output area in the bottom 10% most deprived in Essex, and St Andrews and Patching Hall both have one super output area in the bottom 25% most deprived in Essex.

The IMD 2007 indicates that the wards in Chelmsford falling into the bottom 25% most deprived in Essex have moved further up the index. Some new wards now also fall into this category.

Households living in fuel poverty, spending more than 10% net household income on heating and hot water, across the borough has been estimated at 9.8% compared to 10% nationally and is greatest in rural areas of the borough. There are four wards with a percentage of fuel poor households above 20%: All Saints, Waterhouse Farm, Cathedral and Old Moulsham. South Woodham – Collingwood East and West has the lowest percentage at 7.7%.



### Education and Skills

Chelmsford has 56 primary schools and 11 secondary schools, 2 of which are among the top performing in the country. Chelmsford is also home to Anglia Ruskin University, Chelmsford College and Writtle College.

In 2004 around 79% of the population had a NVQ 1 or higher. In 2005/06 the percentage of 15 yr old pupils in local authority schools achieving 5 or more GCSEs at grade A\*-C or equivalent was 56.7%. This shows a positive trend.

### Employment

Chelmsford is the largest provider of employment opportunities in Essex. In 2005, 85.1% of the Chelmsford population were economically active and the services sector accounted for around 85% of employee jobs. The financial sector continues to grow in importance in the borough. In 2007, only 1.2% of the population were claiming Job Seekers Allowance.

### Environment

Ecological footprint measures how much nature we have, how much nature we use, and who uses what. Ecological footprint for the world is 2.2 global hectares per person but the UK average is 5.4 global hectares per person. Chelmsford is above the England and Essex average at just over 5.6 global hectares per person. In 2006/07 33.58% of household waste was recycled or composted.

There are various figures regarding CO2 emissions per capita and a partnership approach is needed in identifying a baseline that all agencies can work with.

### Health and Activity

People of Chelmsford are relatively healthy with an average life expectancy of 80.3 years. South Woodham, Chetwood and Collingwood ward has the highest life expectancy at 83.4 years. The overall difference in life expectancy between wards is 6.7 years.

Mortality from breast cancer, prostate cancer, circulatory and respiratory diseases are better than the average for Essex. Alongside this, the mental health of Chelmsford residents is better than the Essex average with a low percentage of the working age population suffering from depression or a neurotic disorder. However, hip fractures in the elderly do show an above average trend in the borough.

Adults in Chelmsford are more likely than other people in Essex to take part in physical exercise at least 3 times a week and although obesity rates in adults are lower than compared to England averages they are still around 20%. Obesity in children also shows an increase between reception year and year 6.

### Sexual Health

Chelmsford has seen an overall reduction in the rate of teenage pregnancies (15-17 year olds) since 1997. The rate per 100,000 of the population infected with chlamydia reported in 2006 was below the England average. This gives some indication of what the sexually transmitted disease rate is like in the Chelmsford population.



### Drugs and Alcohol

The Home Office estimates that the prevalence of drug misuse in Chelmsford is below the England and Essex average. However it is estimated that the prevalence of binge drinking in Chelmsford is above the East of England average. The percentage of the population who were estimated to be smokers between 2000-2002 was below the Essex average.

### Crime

Chelmsford has a recorded crime BCS (theft of/from a vehicle, vehicle interference and tampering, domestic burglary theft or unauthorised taking of a pedal cycle, theft from the person, criminal damage, common assault, wounding and robbery) comparator offences per 1,000 population 2006/07 which is lower than the England and Wales average and below the Essex police force total. Violence against the person and alcohol related crime is also below the England average and Essex police total.

The number of people who were killed or seriously injured on Chelmsford's roads was above the Essex and England average. In 2006, 130 people were killed or seriously injured on the boroughs roads, 23 of these were young drivers.

### Housing

Compared to England (68.1%), Chelmsford has a higher number of owner occupiers (78.3%) but lower private rented sector (5.9% compared to 8.8%) and social rented sector (12.9% compared to 19.3% for England). All social housing in the borough is owned by Housing Associations.

The entry level house price (lower quartile) in Chelmsford borough was £184,000 in September 2007. This is a 9.5% increase since September 2006. At 2.9 times joint or 3.5 times single incomes, households would require household incomes of £57,103 or £47,314 (assuming a 10% deposit) to purchase entry level housing. However, the average household income in Chelmsford was estimated to be £36,055.

Primarily due to an increased focus on homelessness prevention, statutory homelessness across the borough decreased from 259 in 2005/06 to 202 in 2006/07 and 181 in 2007/08. Reasons for homelessness continue to be parents no longer willing or able to accommodate (primarily young people) and violent breakdown of relationships, with an increase seen in the first quarter of 2007/08 of homelessness caused by mortgage arrears.

### Disability

Social care services reported in 2005-06 that 0.6 per 1,000 of the Chelmsford population aged 18+ had a severe sensory impairment, and 3.3 per 1,000 had a mild or secondary impairment. 2.2 per 1,000 of the population were reported to have a physical impairment. According to the Learning Disabilities Register, which contains current NHS and social care clients as at 31 July 2007, Chelmsford has 3.2 per 1,000 of the population with a learning disability.

In order to capture the views of local people we have taken the results of a range of recent surveys to which we have added the results of a small survey conducted specifically to inform the plan. The purpose of this limited consultation was to capture the views of sections of the community who may have been missed in previous consultations. We also wanted to delve a little deeper into some of the issues identified by previous surveys.

The surveys used to inform the plan are:

- The Local Development Framework (LDF) consultation – March 2005 onwards
- A survey of the residents of North West Chelmsford – Summer 2007
- The Heart of Essex Business Forum Survey – June 2007
- Customer satisfaction survey 2006

We have supplemented this with:

- An online survey
- A paper survey for people attending the Diversity Forum and Disabled Go consultation – September 2007
- Consultation events for the community and voluntary sector and residents in South Woodham Ferrers – October 2007
- A Youth Conference – November 2007
- A paper survey at the Older Persons' Information Day - November 2007

The results of the consultation are summarised in each section.



## Our Community is Healthy and Active

Residents are supported in choosing healthy and more active lifestyles.

### Our Community told us.....

- The majority already eat enough healthy food.
- They would be encouraged to eat more healthy food if it was cheaper.
- The majority are already very active, exercising 3 or more times per week.
- However, cheaper activities and activities at more appropriate times of the day would help them become more active.

### Our Priorities for Action.....

- Support work towards reducing levels of obesity, smoking and binge drinking in the working age population by promoting physical activity and sport as a vital component in good health.
- Support the work to halt the increase in childhood obesity between reception year and Year 6 of primary school.
- Increase the involvement of older residents in a wide range of activities to improve their health and well being.
- Reduce the barriers to participation in physical activity.

\* (Taken from 'Safeguarding and Improving Health and Wellbeing in Mid Essex'. For more information on healthy lifestyles visit [www.direct.gov.uk](http://www.direct.gov.uk))

Other useful strategies to look at are, Meeting the needs of Older People. A strategy for people over 55 in the borough of Chelmsford, Essex Community and Well Being Strategy and the Essex Later Life Strategy.

†Targets to be set once survey completed by Essex County Council.

### Our Community will know we've succeeded.....

- adult participation in sport increases from a baseline of 21.1% to 24.1% by 2011.
- adult obesity is reduced to less than 1 in 5 adults by 2011.
- the prevalence of smoking is reduced from a baseline of 21.4% by 2011.
- the prevalence of binge drinking is reduced to less than 1 in 6 by 2011.
- the percentage of children in Year 6 who are obese is reduced from a baseline of 14.9% to 13.9%, by 2011
- the percentage of people over 65 who say that they receive the information, assistance and support needed to exercise choice and control to live independently is increased\*

### Our Community can help by.....†

1. Eating sensibly
2. Drinking responsibly and sensibly
3. Staying physically active on a daily basis
4. Giving up smoking – don't start!
5. Practising safe sex
6. Making time for yourself – relax and de-stress
7. Becoming or staying part of your community – try volunteering
8. Protecting you and your family against preventable infections
9. Taking up offers of NHS screening services
10. Using local health resources wisely



## Our Community is Socially Inclusive

All residents have the same opportunities and positive experience, and are able to make choices regarding themselves, their families and their communities.

### Our Community told us.....

- One of the top three issues that need improving in the borough is the provision of activities for young people.
- The most important thing in making somewhere a good place to live is the level of crime.
- A survey of residents of the wards of North West Chelmsford suggested that 70% consider the area has either stayed the same or got worse since 2006.

### Our Priorities for Action.....

- Continue, develop and extend activities and programmes aimed at young people.
- Maintain a safe place to live, work and visit for all residents.
- Reduce the fear of crime and anti-social behaviour.
- Improve the quality of life of residents living in our most deprived neighbourhoods.
- Provide better access to services, including housing, especially for older residents.

### Our Community will know we've succeeded.....

- the number of children and young people who have been the victims of crime and anti-social behaviour is reduced, from a baseline of 1018 (07/08)\*
- A mini Community Plan for is developed and implemented for deprived neighbourhoods by September 2009.
- the Indices of Multiple Deprivation (IMD) 2007 score of the bottom 25% most deprived wards is improved by the next IMD publication in 2010.
- the overall level of crime is reduced from 5,584 (2007) by 2011\*
- the percentage of people over 65 who say that they receive the information, assistance and support needed to exercise choice and control to live independently increases#

### Our Community can help by.....

The Home Office website [www.homeoffice.gov.uk](http://www.homeoffice.gov.uk) has practical advice on how to prevent crime. Advice includes how to protect your home, to staying safe if you are elderly and staying safe online.

[www.beatbullying.org.uk](http://www.beatbullying.org.uk) contains practical toolkits for professionals to enable them to confront bullying in a consistent and fair manner.

\* Targets to be set by the Crime and Disorder Reduction Partnership (CDRP)

# Targets to be set once the baseline survey is completed by Essex County Council.

## Our Community is Thriving

Chelmsford is regarded as a 'community of choice' for businesses wishing to locate and grow because of the highly skilled, motivated and diverse workforce who are able to reach their full potential in education and employment.

### Our Business Community told us.....

- Nearly 70% of those expecting to relocate would do so within the local area.
- Over 25% of businesses saw the lack of people with the right skills as a major issue.
- Key requirements for staff are customer service skills, basic numeracy and literacy.
- The key factor in terms of providing training for staff is the availability of the right course.
- Those businesses that have experienced problems with recruitment identified applicants with inappropriate qualifications and skills and school leavers and graduates with a poor work ethic as a major difficulty.

### Our Priorities for Action.....

- maintain above average (Essex) levels of employment thus providing more jobs and reducing the number of people on social benefits.
- engage adults in a wider range of learning opportunities including cultural learning, particularly those most excluded from the labour market.

### Our Community will know we've succeeded.....

- the average number of economically active people in Chelmsford stays at or above the 2007 baseline of 85.1% (East of England baseline 80.4%).
- the average (claimant) unemployment rate in Chelmsford borough stays at or below the December 2007 baseline of 1.2% (East of England average 1.6%)
- 89% of adults are qualified to at least a 'functional' level of literacy, by 2011 (Baseline to be agreed in March 2009. Targets will be set once baselines can be established)
- the proportion of working age people in the borough qualified to at least Level 2\* increases from 68.3% in 2006 to 79% by 2011
- the proportion of working age people in the borough qualified to at least Level 3\* increases from 48.25% in 2006 to 56% by 2011.

\* Levels are established on the National Qualifications Framework, each level corresponding to a number of different qualifications and skills.

## Our Community can help by.....

- If you are a local organisation or business you can help us by participating in partnerships geared to inform, drive and manage change and improvement. The Heart of Essex Business Group, the Essex Business Consortium and the Chelmsford Partnership Business Forum are useful partnerships to get involved with. Contact the Inward Investment, Economy and Growth Team at Chelmsford Borough Council for more information.
- Embrace the opportunities available to develop your own skills, qualifications and self esteem and discuss these with your employer. Volunteering can also help improve skills and confidence.

Some useful organisations include:

Learning and Skills Council [www.lsc.gov.uk](http://www.lsc.gov.uk)

Voluntary Sector Training [www.voluntarysectortraining.org.uk](http://www.voluntarysectortraining.org.uk)

Chelmsford College [www.chelmsford-college.ac.uk](http://www.chelmsford-college.ac.uk)

Writtle College [www.writtle.ac.uk](http://www.writtle.ac.uk)

Anglia Ruskin University [www.anglia.ac.uk](http://www.anglia.ac.uk)

Essex County Council [www.essexcc.gov.uk/adultlearning](http://www.essexcc.gov.uk/adultlearning)

## Our Community is Nurturing the Environment

Local people are able to access high quality green open space and play an active role in creating a cleaner, greener future.

### Our Community told us.....

- Climate change and in particular conservation concerned them and they would like to see more projects to preserve natural habitats.
- Just over 80% of people were satisfied with waste and recycling facilities.

### Our Priorities for Action.....

- Enhance public open space for the benefit of biodiversity.
- Mitigate the impact of climate change on the borough.
- Increase overall % satisfaction rates with the recycling service year on year.
- Reduce waste through increased recycling and partnership waste prevention initiatives.

### Our Community will know we've succeeded.....

- Increase the number of managed wildlife spaces (defined in the National Parks & Access Act) from a baseline of 2 by 2011, as set out in the Biodiversity Action Plan.
- By March 2009, agree a CO2 per capita baseline for Chelmsford.
- Increase the recycling and composting rate to 40% by March 2011/12.
- Decrease the kilograms of waste per head of population going to landfill\*.
- Increase satisfaction with waste and recycling services to over 80% by 2011.

### Our Community can help by.....

**REDUCE** the amount of packaging you buy, and choose not to buy over-packaged items

**REUSE** – carrier bags, refillable products, recharge batteries

**RECYCLE** – compost, door to door collections, recycling banks, pick products which are already recycled.

**SAVE ENERGY** – turn your thermostat down by 1 point, wash at 30 degrees, turn lights off, and turn appliances off standby.

Some useful websites:

Recycle your old mobile phone [www.fonebak.org](http://www.fonebak.org)

Recycle your old computer [www.computer-aid.org](http://www.computer-aid.org)

Recycle your old spectacles [www.vao.org.uk](http://www.vao.org.uk)

## Our Community is Well Connected

Communities are connected by sustainable means of transport, reducing further the need to use their cars.

### Our Community told us.....

- Public transport should be improved to tackle environmental issues
- Congestion is one of the top three things that most needs improving in Chelmsford.
- Public Transport is vital to local businesses.
- Cheaper and more reliable bus services would reduce car use.
- Park and Ride is very popular and should be extended to other sites.

### Our Priorities for Action.....

- Increase the range and use of more environmentally sustainable travel options – walking, cycling and public transport – to reduce congestion and contribute to reduced impact on climate change.

### Our Community will know we've succeeded.....

- Increase the number of major employers with local travel plans from 28 to a minimum of 30 by 2010.
- Produce a sustainable transport events calendar, by March 2009.
- Reduce the average journey time per mile in the morning rush hour across the town centre. (Establish a baseline by March 2009 and agree reduction targets for 2010 and 2011)
- The creation of further park and ride schemes in the borough.

### Our Community can help by.....

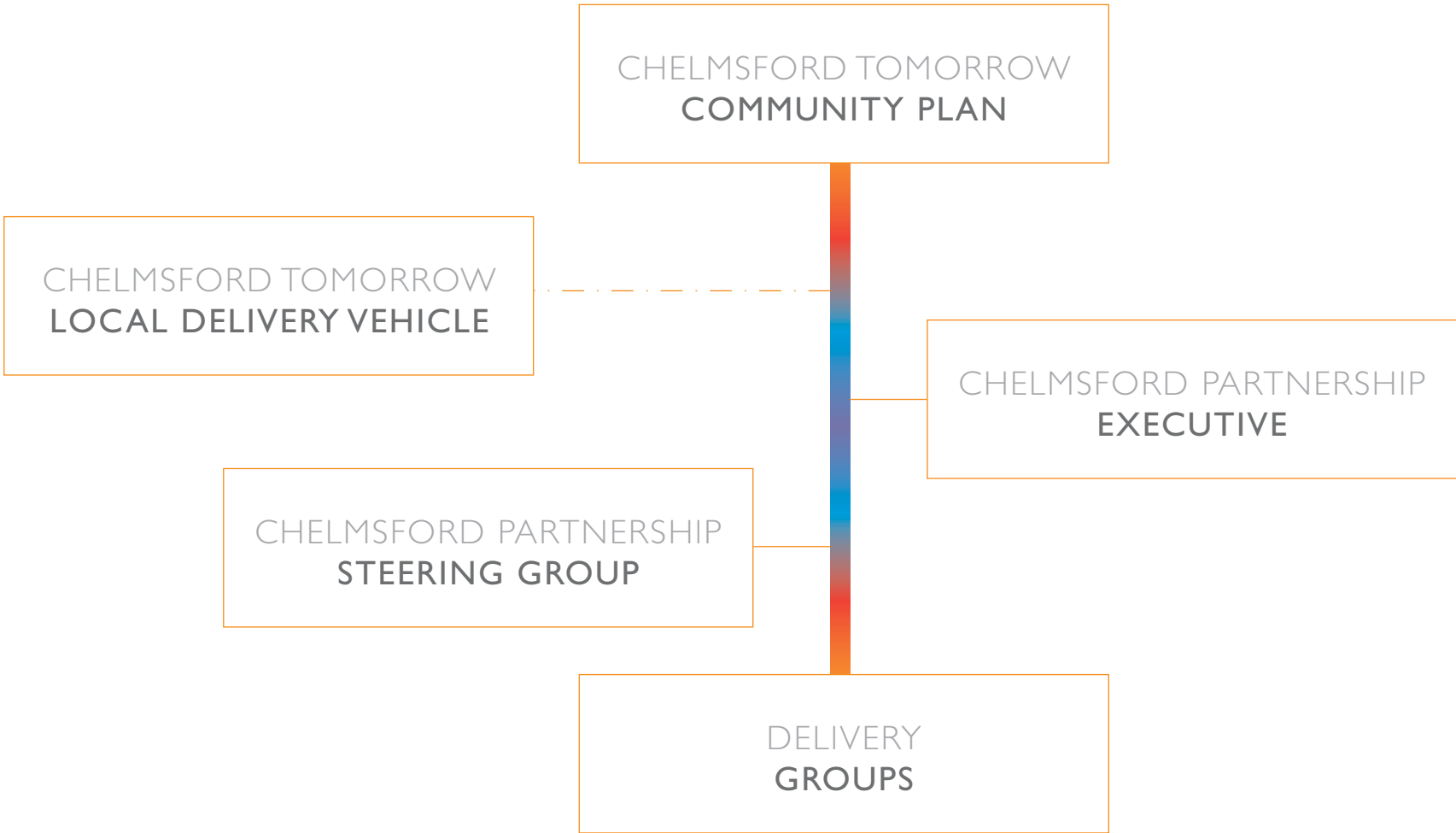
Not using a car for short journeys and walking, cycling or taking public transport instead. This helps to reduce congestion, helps the environment and is healthy.

Department of Transport [www.dft.gov.uk](http://www.dft.gov.uk)

Find out which cars are the most environmentally friendly and fuel efficient [www.cleangreencars.co.uk](http://www.cleangreencars.co.uk)



The Chelmsford Partnership will deliver the Chelmsford Tomorrow 2021 Community Plan. The Partnership will work in parallel to the Chelmsford Tomorrow Delivery Vehicle. The following diagram shows how the Chelmsford Partnership exists to enable the delivery of the Community Plan, and also how this links with the Delivery Vehicle.



Each group consists of representatives from the following groups:

---

### Executive Group

Chelmsford Borough Council, Mid Essex Primary Care Trust, Essex County Council, Essex Police, Anglia Ruskin University, Chelmsford Council for Voluntary Service, Learning and Skills Council, Chelmsford Sport

### Steering Group

All Executive Group representatives plus representatives from all the delivery groups. In addition, provision is made for representation from the following groups: Parish Councils, Registered Social Landlords, businesses, voluntary sector, faith groups and Black and Minority Ethnic groups.

### Delivery Groups

Delivery Groups will consist of representatives who can affect actions in light of the priorities for the group.

A full action plan for 'Our Community is valuing its Young People' is included in the Children and Young Persons' Strategic Partnership (CYPSP) Plan.

A full action plan for 'Our Community is valuing its Older People' is included in the Older Persons' Strategy 2006-2012.

In addition, the Local Area Agreement sets out a number of priorities and targets for the area, which are agreed between central government, Essex County Council, the Essex Partnership, Chelmsford Borough Council and other key partners. The Local Area Agreement represents an important element in delivering our Chelmsford Tomorrow vision.

Alongside our own performance indicators, we will also monitor indicators in the LAA which align with our priorities. Details will be provided once the second LAA is signed off in June 2008.

# Community PLAN



## CHELMSFORD PARTNERSHIP

One Vision: Chelmsford Tomorrow

Chelmsford Tomorrow 2021

### Further information

To find out more please visit our website where you will have access to all our current plans.

[www.chelmsford.gov.uk/chelmsfordtomorrow](http://www.chelmsford.gov.uk/chelmsfordtomorrow)

Alternatively contact us on 01245 606330  
or email  
[chelmsfordtomorrow@chelmsford.gov.uk](mailto:chelmsfordtomorrow@chelmsford.gov.uk)

This publication is available in alternative formats including Braille, large print, audio tape and other languages. Please call 01245 606900.



Published by  
Chelmsford Partnership June 2008