

Tindal Square and Market Road Project Update



Transforming Tindal Square:
Public Realm Improvements

Bulletin No. 18

2nd November 2022

Contractor Details:

Tindal Square – Dyer & Butler

Market Road – Marlborough Ltd

Project Manager – Rob Venables/Phil Cowland

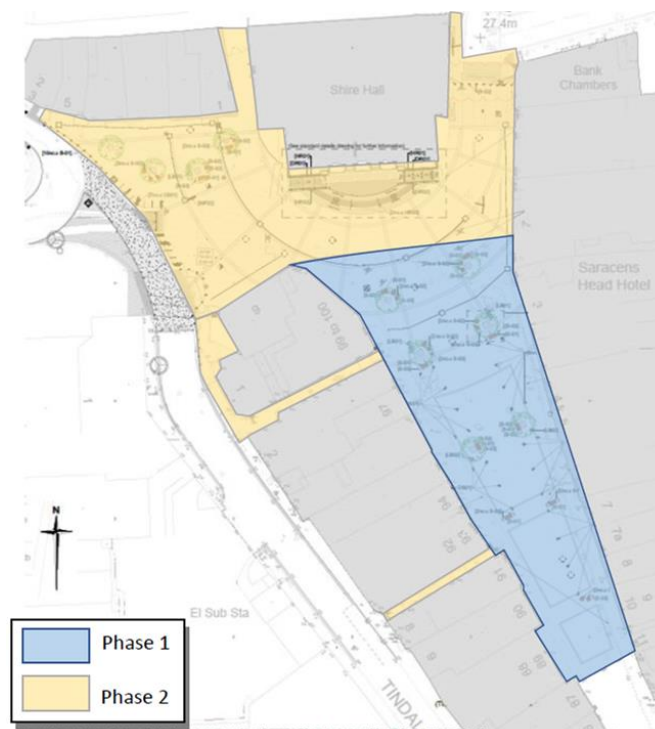


Latest Achievements:

Tindal Square

The following has been accomplished since the last update:

- The steps to the Shire Hall have been removed with works underway to install the new access to Shire Hall.
- The works to install the surface drain to the south of Tindal Square have been completed.
- Underground drainage pipes have been installed in phase two of the area. Electrical ducting works have also been completed.
- The paving of the High Street has been completed between The Garrison and Shire Passage entrance.
- The remaining area in phase one has been prepared for the new paving to be installed.



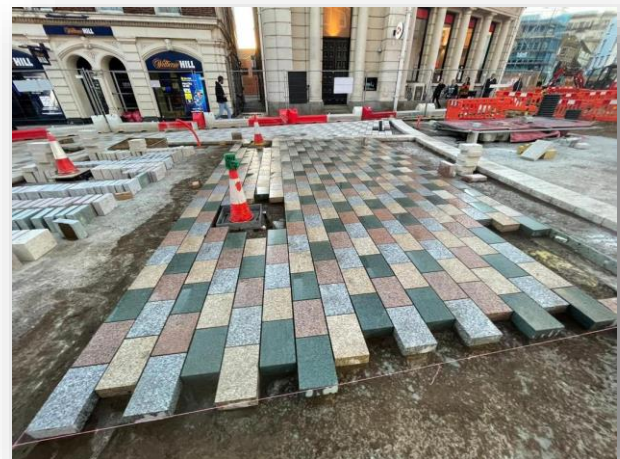
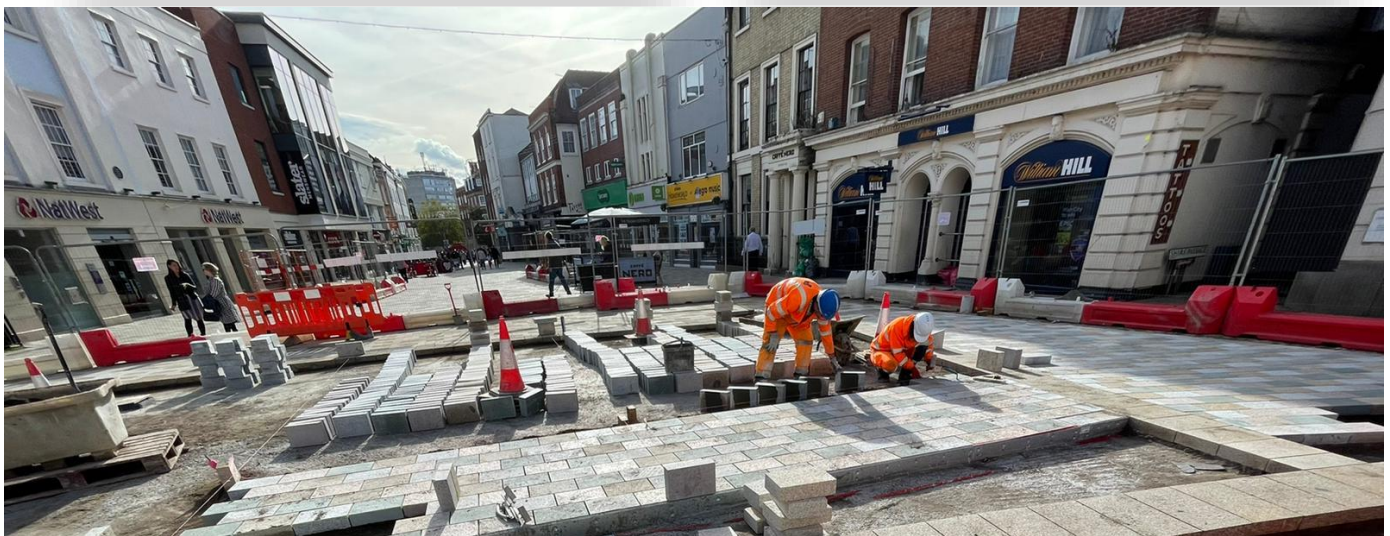
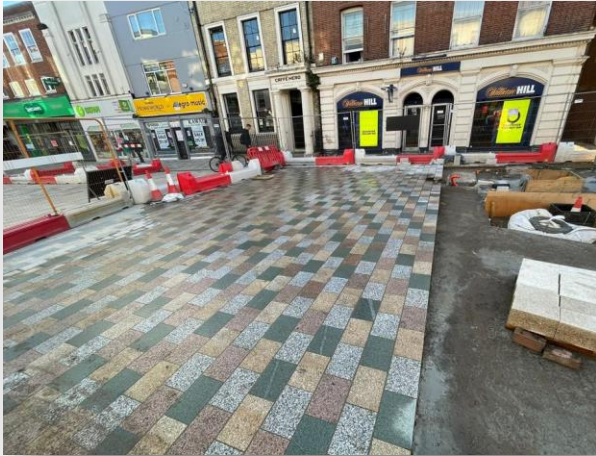
Tindal Square and Market Road Project Update



Transforming Tindal Square:
Public Realm Improvements

Bulletin No. 18

2nd November 2022



Tindal Square and Market Road Project Update



Transforming Tindal Square:
Public Realm Improvements

Bulletin No. 18

2nd November 2022

Next steps:

Tindal Square

The next stages in construction for the project are:

- The installation of remaining slot drains in phase two will have begun with all underground pipe works installed.
- The installation for slot drains two, seven and eight will be progressed.
- Works will begin to install the retaining wall which will provide strength and structure for the new steps, ramp and graduated steps to Shire Hall.
- The paving in phase one will be visibly complete.



Tindal Square and Market Road

Project Update



Transforming Tindal Square:
Public Realm Improvements

Bulletin No. 18

2nd November 2022

Tindal Square and the Sevastopol Cannon

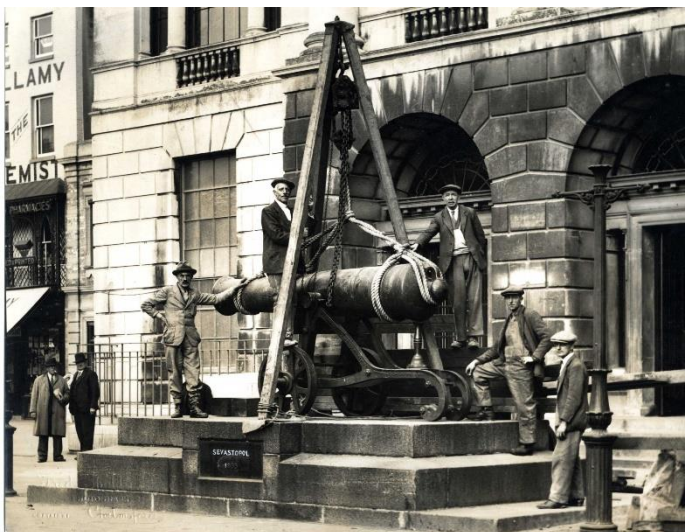
This week we are going back in time to another important part of the history of Tindal Square and the Sevastopol Cannon which have a rather interesting link.

The cannon was captured after The Crimean War between 1853-1856, with the siege of Sevastopol in 1855 becoming a pivotal point. The Essex Regiment (formerly known as the 44th and 56th Regiments of Foot) played a part in the war, with the allied forces of Britain, France and the Ottoman Empire winning the war. Following the victory over 300 Russian cannons were captured and Queen Victoria decided to gift them to town and cities of Britain and the empire as a lasting memorial of the war. The cannon was made in St Petersburg and bears the imperial Russian eagle insignia however the carriage is not the original.

When gifted to Chelmsford in 1858 the cannon was installed in Tindal Square in front of the Shire Hall on a monumental granite plinth on which it still stands today. The cannon remained a focal point of the square, however in 1908 some local apprentices decided to play a prank by firing the cannon which resulted in the breaking of many windows of the Saracens Head Hotel.

The cannon was moved to Oaklands Park in 1937, however during World War II many cannons were destroyed for scrap metal, with the cannon being lucky to not suffer the same fate as Oaklands Park was a collecting centre for railings, gates, pots and pans that were handed in for the war effort.

The cannon has remained in Oaklands Park ever since where it is a popular feature of the park and a part of the collections of Chelmsford Museum.



Tindal Square and Market Road Project Update



Transforming Tindal Square:
Public Realm Improvements

Bulletin No. 18

2nd November 2022



Tindal Square and Market Road Project Update



Transforming Tindal Square:
Public Realm Improvements

Bulletin No. 18

2nd November 2022

Tindal Square – Safe walking routes

The diagram below shows the safe walking routes over the next fortnight whilst the works to the central and northwest parts of the work area are completed. Please note access to businesses will be always maintained.



For further information regarding the project please visit:

www.essexhighways.org/tindal-square

For general enquiries please email: tindalsquare@chelmsford.gov.uk