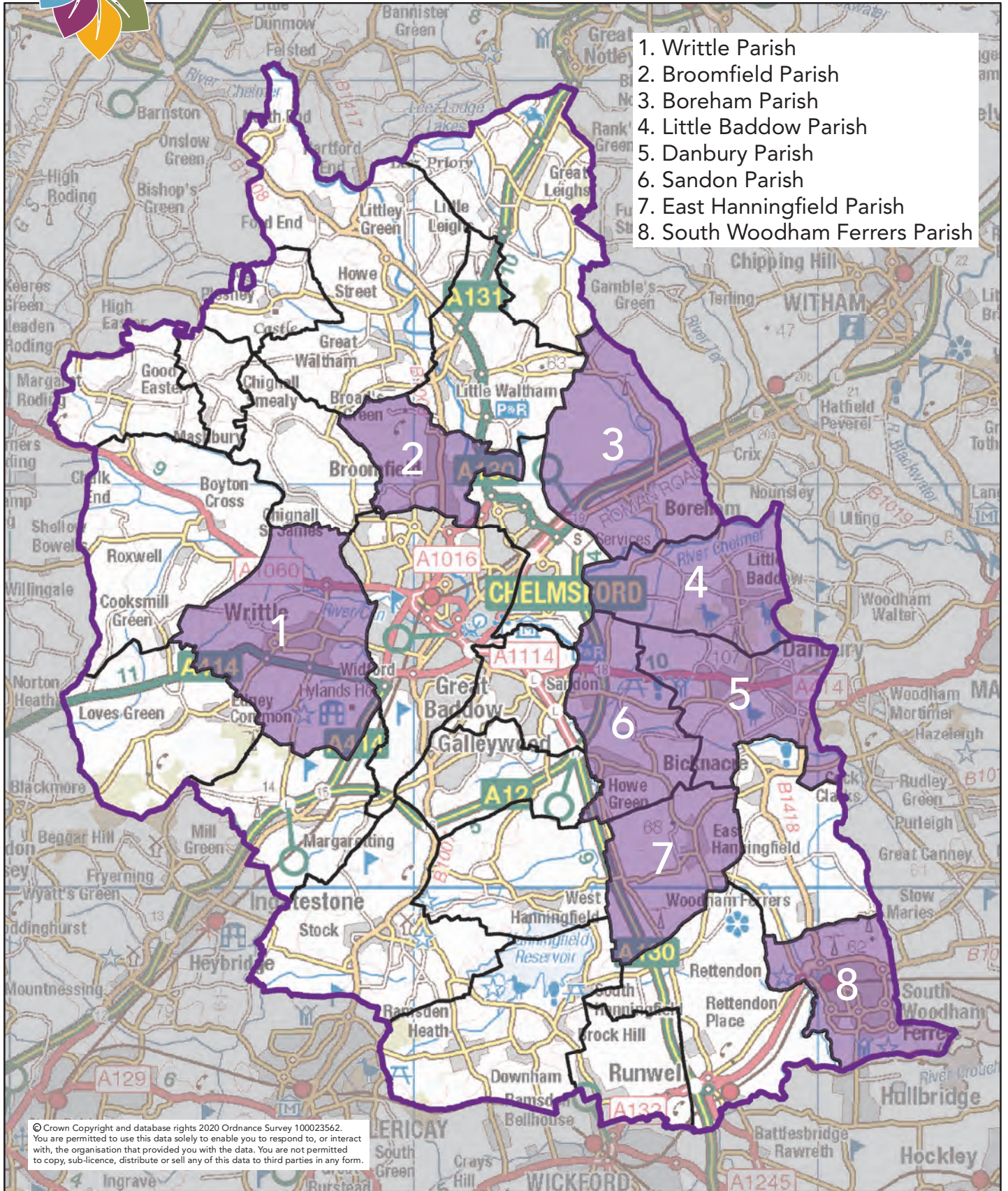




Designated Neighbourhood Plan Areas

Chelmsford Local Plan Adopted May 2020



0 2,500 5,000
Metres

Spatial Planning Services
Directorate for Sustainable Communities
Chelmsford City Council
Civic Centre, Duke Street, Chelmsford, CM1 1JE
Telephone 01245 606330
planning.policy@chelmsford.gov.uk
www.chelmsford.gov.uk

