

Tindal Square and Market Road Project Update



Transforming Tindal Square:
Public Realm Improvements

Bulletin No. 13

5th August 2022

Contractor Details:

Tindal Square – Dyer & Butler

Market Road – Marlborough Ltd

Project Manager – Rob Venables/Phil Cowland

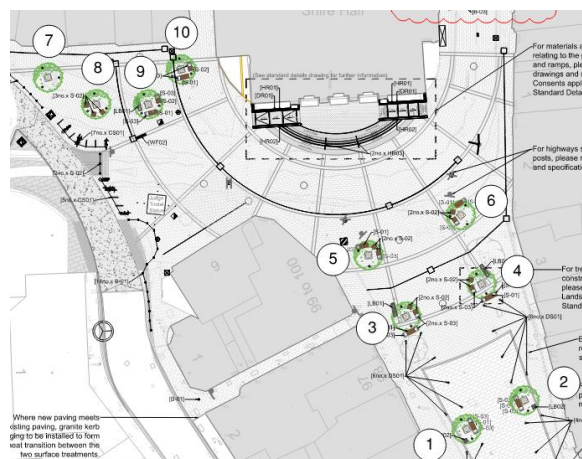


Latest Achievements:

Tindal Square

The following has been accomplished since the last update:

- After discovering unknown services within the area for tree four this has prevented the tree pit crates from being installed whilst a solution in the design has been made. The roots for the previous tree have also been removed.
- Commenced with drainage layer for trees seven to ten and started the tree pit crate installation for these trees.
- Progressed with the underground installation of the utility chambers for lighting and power supplies in the High Street.
- Diversion of existing gas mains which has been completed by Cadent.
- Works to install a new CCTV cabinet to Shire Passage are ongoing.
- A drainage carrier pipe has been installed to the underground access chamber for the storm water drainage tank.
- Existing street furniture has been removed in preparation for follow on works.
- Extended the repaving of the High Street northwards, covering the area outside Specsavers with access to businesses being maintained at all times.



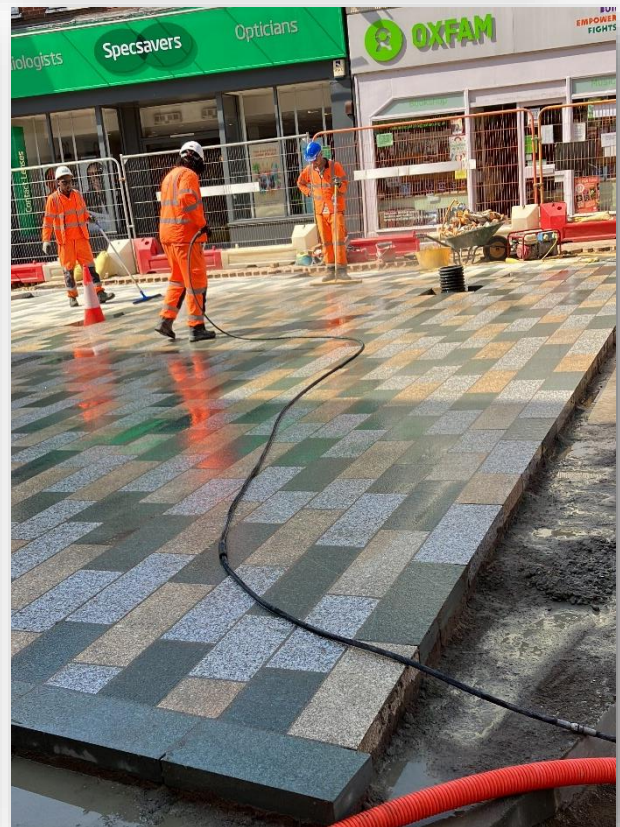
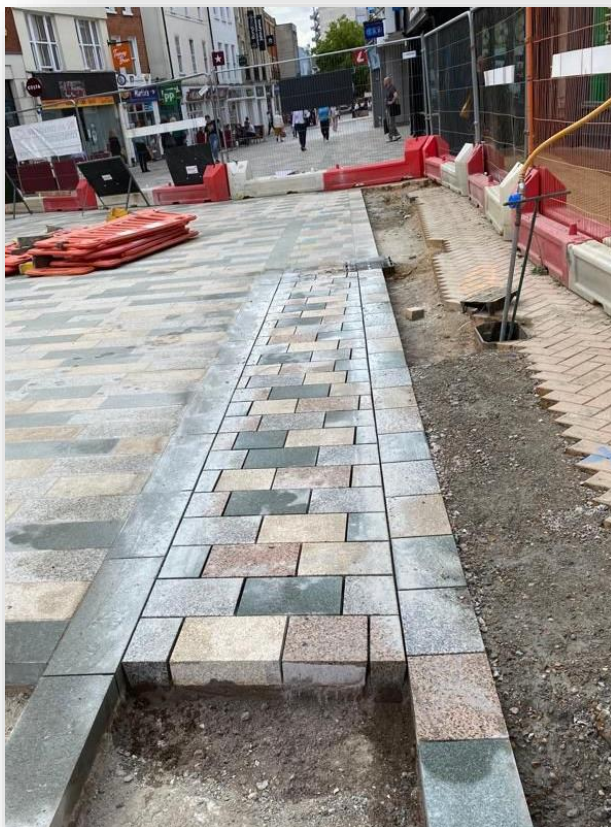
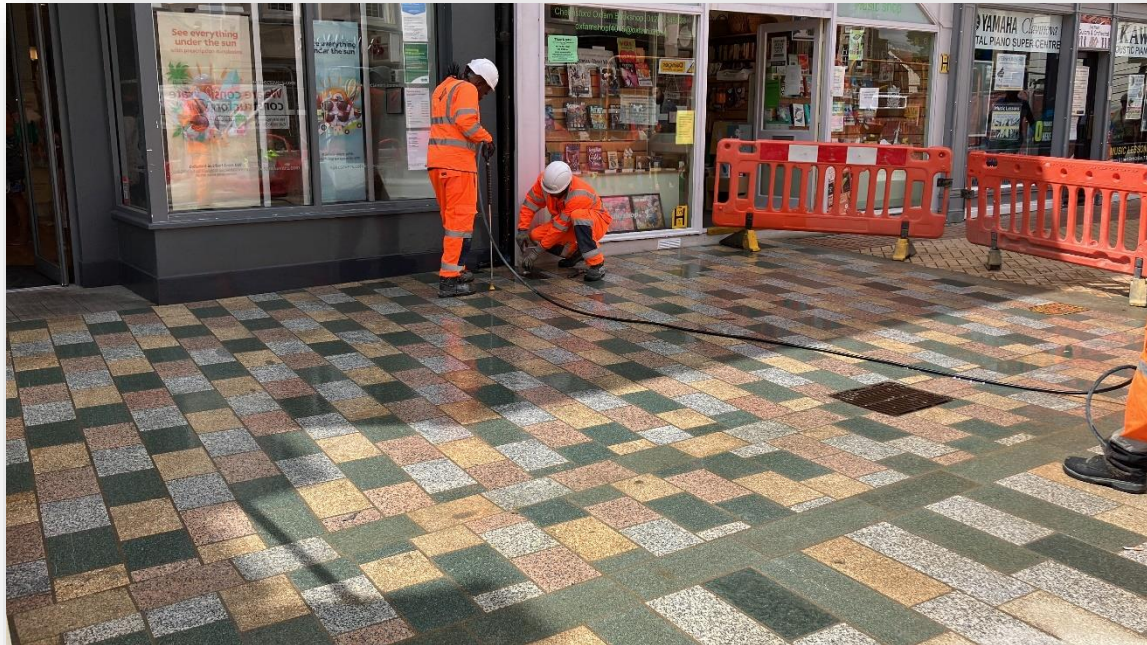
Tindal Square and Market Road Project Update



Transforming Tindal Square:
Public Realm Improvements

Bulletin No. 13

5th August 2022



Tindal Square and Market Road Project Update



Transforming Tindal Square:
Public Realm Improvements

Bulletin No. 13

5th August 2022

Next steps:

Tindal Square

The next stages in construction for the project are:

- The tree pit crates for trees four, six and seven to ten will be substantially complete. The excavation for tree five will also be well underway.
- Continuing with the installation of utility chambers to support in ground lighting for trees three and four.
- Works to divert the gas main outside Shire Hall will be complete for BT to complete their required work.
- After completion of the gas pipe diversions, BT will be on-site to install their new underground chamber with the previous one (which will be replaced by the new steps to Shire Hall) will be removed.
- Progressing with the ground preparation before installing the paving in areas seven, eight and nine.



Tindal Square and Market Road

Project Update



Transforming Tindal Square:
Public Realm Improvements

Bulletin No. 13

5th August 2022

Tindal Square

Accessibility & our High Street – how Tindal Square will benefit people with visual impairment

As part of a series, for this bulletin we will be focusing on the accessibility of the High Street and how we will improve this space for the visually & physically impaired as well as the neurodiverse community and the issues they face when using public spaces. In this we will focus on the issues of the visually impaired and how we are improving the space for them.

One issue for visually impaired persons in the public space is lack of visual contrast in surfaces, as objects with a similar hue (the nature of the colour) and low chroma (the intensity of the colour) can be difficult for the visually impaired to distinguish. In order to determine differences in colour people who are blind or partially sighted will look at how much light the surface reflects, known as its light reflective value (LRV). Within the design of the project, we have made considerable efforts to use a paving and public seating design with a high LRV to help users navigate the space and avoid obstacles.

We have also chosen to design the space with a clear walkway at the building curtilages, as blind or partially sighted persons who use a long cane will use the building line to navigate the High Street. The positioning of the trees, whilst helping with noise absorption also help create focal points and enable people to have a long-distance view of the High Street

Whilst the works to improve the High Street and Tindal Square are on-going, we have made sure that pedestrian barriers are used to protect the site area that have a high contrast and are funnelled for better visibility. Our Access Officer undertakes regular inspections to ensure the area is suitable for all visitors.



Tindal Square and Market Road Project Update



Transforming Tindal Square:
Public Realm Improvements

Bulletin No. 13

5th August 2022



Tindal Square and Market Road Project Update



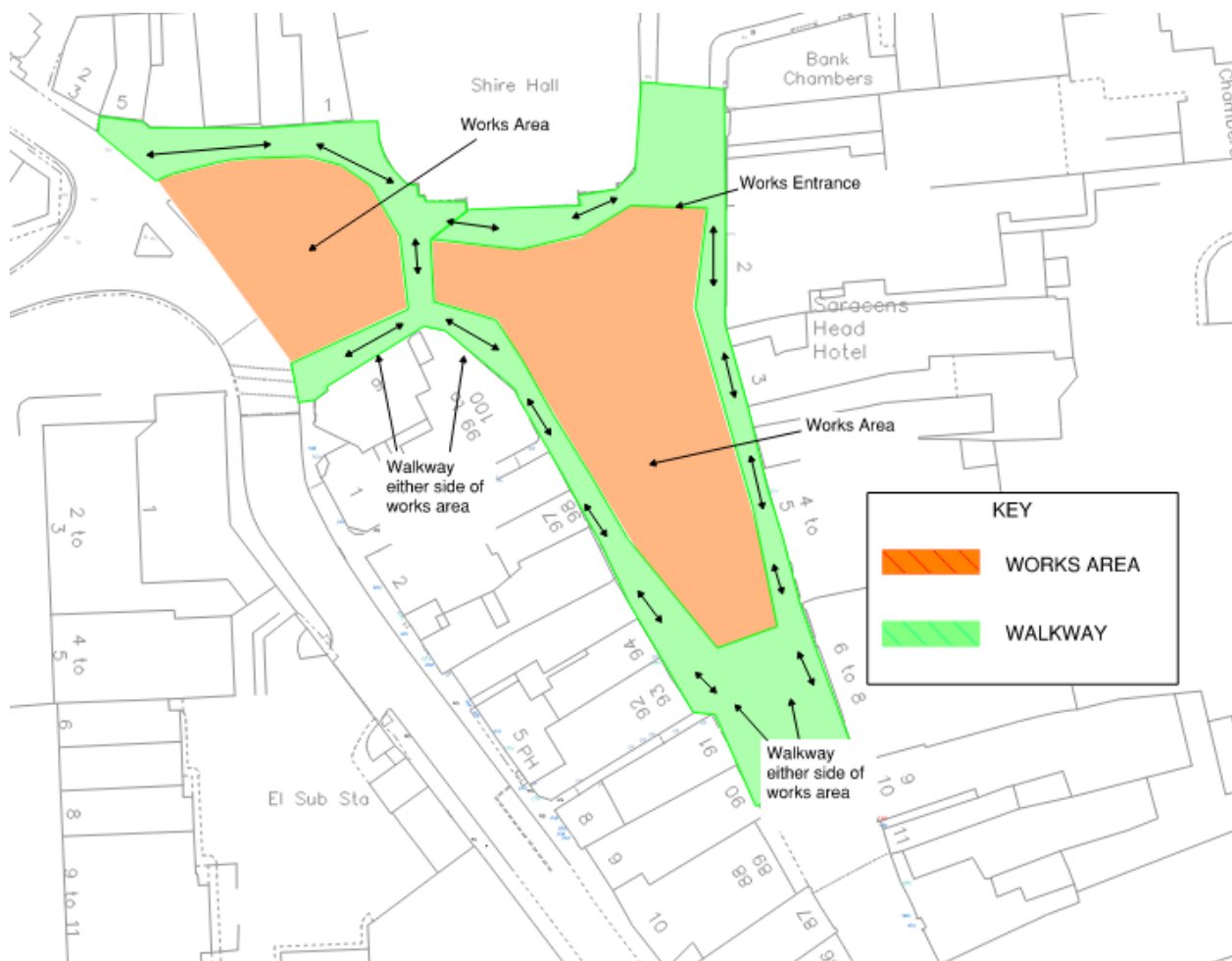
Transforming Tindal Square:
Public Realm Improvements

Bulletin No. 13

5th August 2022

Tindal Square – Safe walking routes

The diagram below shows the safe walking routes over the next fortnight whilst the works to the central and northwest parts of the work area are completed. Please note access to businesses will be always maintained.



For further information regarding the project please visit:

www.essexhighways.org/tindal-square

For general enquiries please email: tindalsquare@chelmsford.gov.uk