

# Tindal Square and Market Road Project Update



Transforming Tindal Square:  
Public Realm Improvements

## Bulletin No. 15

6<sup>th</sup> September 2022

### Contractor Details:

**Tindal Square** – Dyer & Butler

**Market Road** – Marlborough Ltd

**Project Manager** – Rob Venables/Phil Cowland

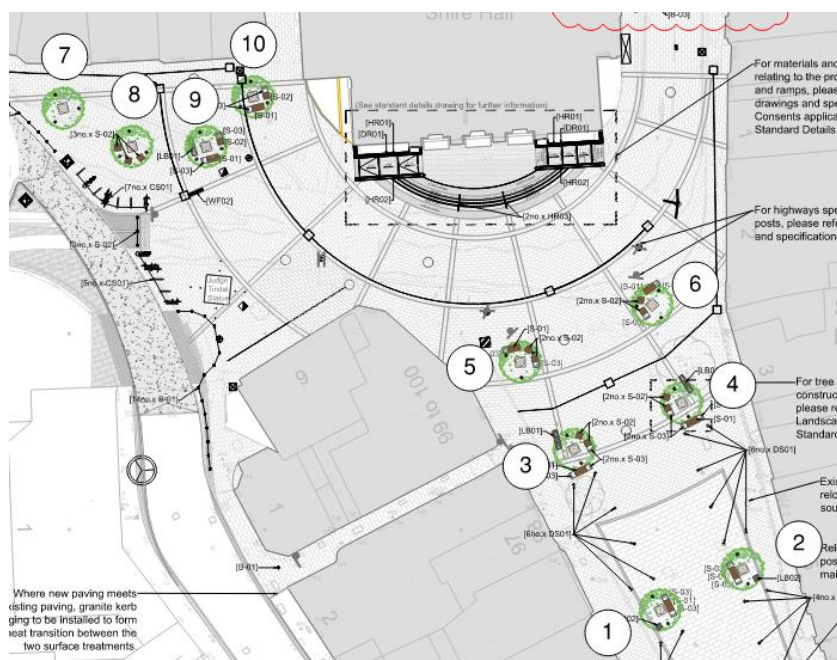


### Latest Achievements:

#### *Tindal Square*

The following has been accomplished since the last update:

- BT Openreach are working outside the Shire Hall on the installation of their new underground chamber, with the previous chamber now demolished.
- The new paving has continued to be installed, covering the area between William Hill and The Garrison.
- All existing signs and street furniture have been removed in preparation for new furniture and lighting to be installed later in the project. Temporary lighting is now in place in the meantime.
- The installation of tree pits for trees four and seven to ten are complete.





# Tindal Square and Market Road Project Update



Transforming Tindal Square:  
Public Realm Improvements

Bulletin No. 15

6<sup>th</sup> September 2022



# Tindal Square and Market Road Project Update



Transforming Tindal Square:  
Public Realm Improvements

## Bulletin No. 15

6<sup>th</sup> September 2022

### Next steps:

#### *Tindal Square*

The next stages in construction for the project are:

- BT Openreach will be reconstructing the new underground chamber outside the Shire Hall.
- The excavation for tree pit five will be completed.
- The underground utility chambers will be redesigned, as these are required to provide streetlighting to the area outside Shire Hall.
- Slot drainage channels within Tindal Square will be installed.
- The new paving in areas seven, eight and nine will be completed.





# Tindal Square and Market Road

## Project Update



Transforming Tindal Square:  
Public Realm Improvements

### Bulletin No. 15

6<sup>th</sup> September 2022

### *Tindal Square*

#### ***Our High Street; neurodiversity and sensory impairments***

In the final part of our series we will look at how the change of environment affects the neurodiverse community as a result of the works.

Neurodiversity covers a range of impairments and conditions which is important for a space to accommodate when designing public spaces. Busy crowded environments with high sound volumes and people can cause issues with sensory processing and spatial awareness.

When considering the design of the space we have emphasised a focus on making the space safe and accessible for all people. The tree placement within the space provides seclusion from the main walkway with public seating nearby to provide an ambient quieter area for people to use. By keeping the sight line of the Shire Hall and Judge Tindal Statue clear provides familiar visual cues should someone feel lost or unsafe to be able to find help.

During the works our barriers create a funnel effect to prevent persons with conditions that cause issues with spatial awareness from walking into areas that are unsafe or hurting themselves by walking into a flat barrier. We have also tried to keep any noisy works to a minimum and only working for small periods at a time.

Signage in the area is also an issue for people with neurodiverse conditions, during the construction phase we have kept signage to a minimum with only essential signage being displayed to prevent confusion. We have also sought to increase public awareness of people with neurodiverse conditions, who may have a tendency to follow other people when traversing the area, by highlighting to them to be safe in the environment and not walk in the road or cross at unsafe points where someone could follow them.

We hope that by including and highlighting features to assist people with neurodiverse conditions and sensory impairments can make this space accessible for all.

#### **WHO'S BEHIND YOU?**

Guide dogs, young people and neuro-diverse individuals have a natural tendency to follow the person in front. If you walk in the road they may follow.

**PLEASE DO NOT WALK IN THE ROAD**

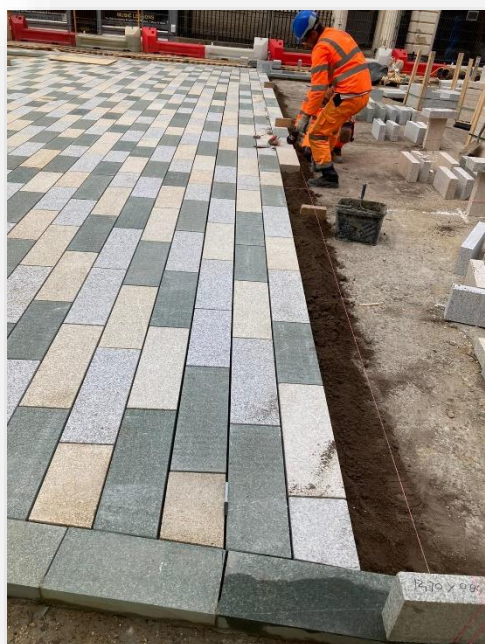
# Tindal Square and Market Road Project Update



Transforming Tindal Square:  
Public Realm Improvements

**Bulletin No. 15**

**6<sup>th</sup> September 2022**



# Tindal Square and Market Road Project Update



Transforming Tindal Square:  
Public Realm Improvements

**Bulletin No. 15**

**6<sup>th</sup> September 2022**

## ***Tindal Square – Safe walking routes***

The diagram below shows the safe walking routes over the next fortnight whilst the works to the central and northwest parts of the work area are completed. Please note access to businesses will be always maintained.



For further information regarding the project please visit:

[www.essexhighways.org/tindal-square](http://www.essexhighways.org/tindal-square)

For general enquiries please email: [tindalsquare@chelmsford.gov.uk](mailto:tindalsquare@chelmsford.gov.uk)