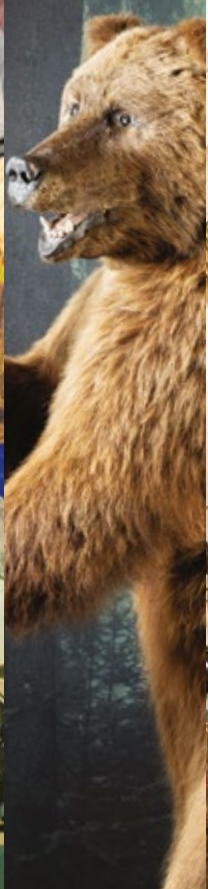
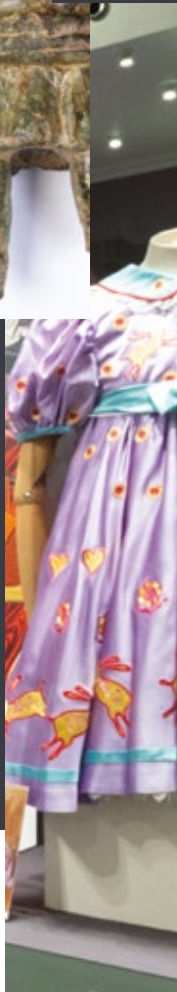
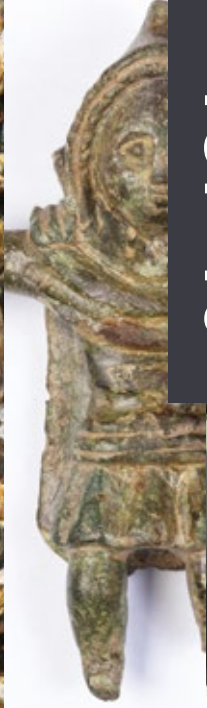


CHELMSFORD MUSEUM

TOP 10



WE'RE BUZZING WITH CURIOSITY

HOW TO USE THIS GUIDE

We have thousands of artifacts telling the story of Chelmsford, so if time is tight take our top 10 tour, it's been specially picked by our museum team.

Please allow at least 30 minutes to take the tour.

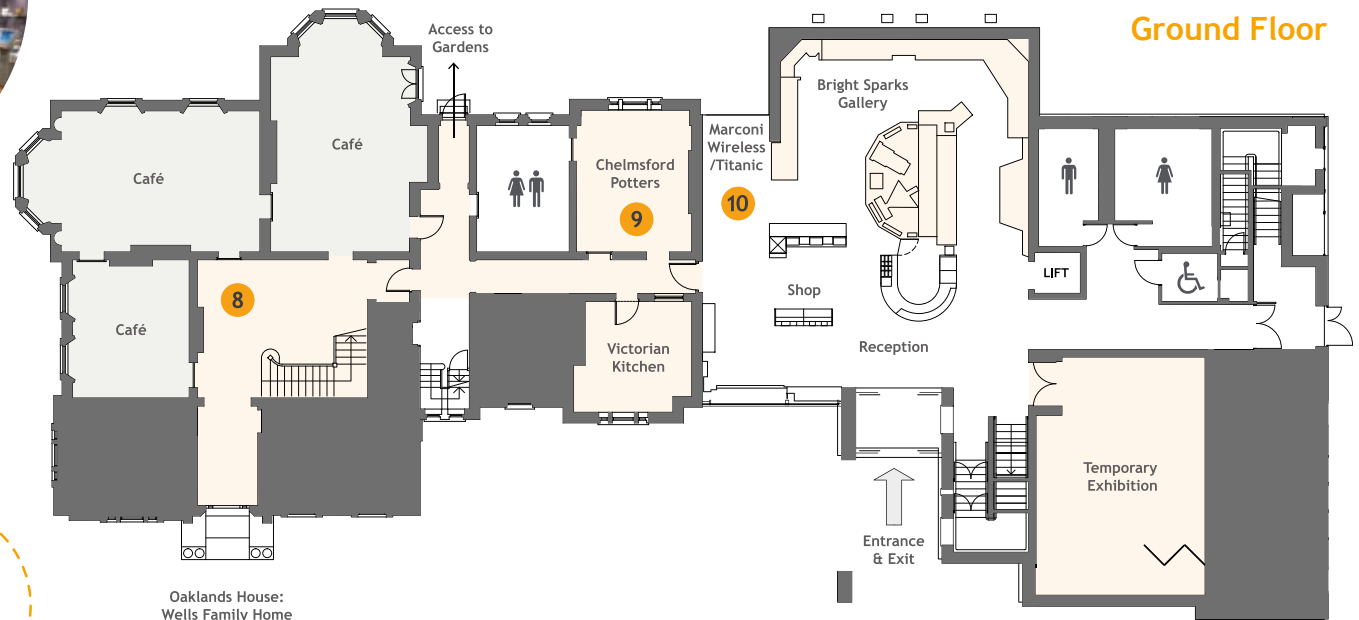
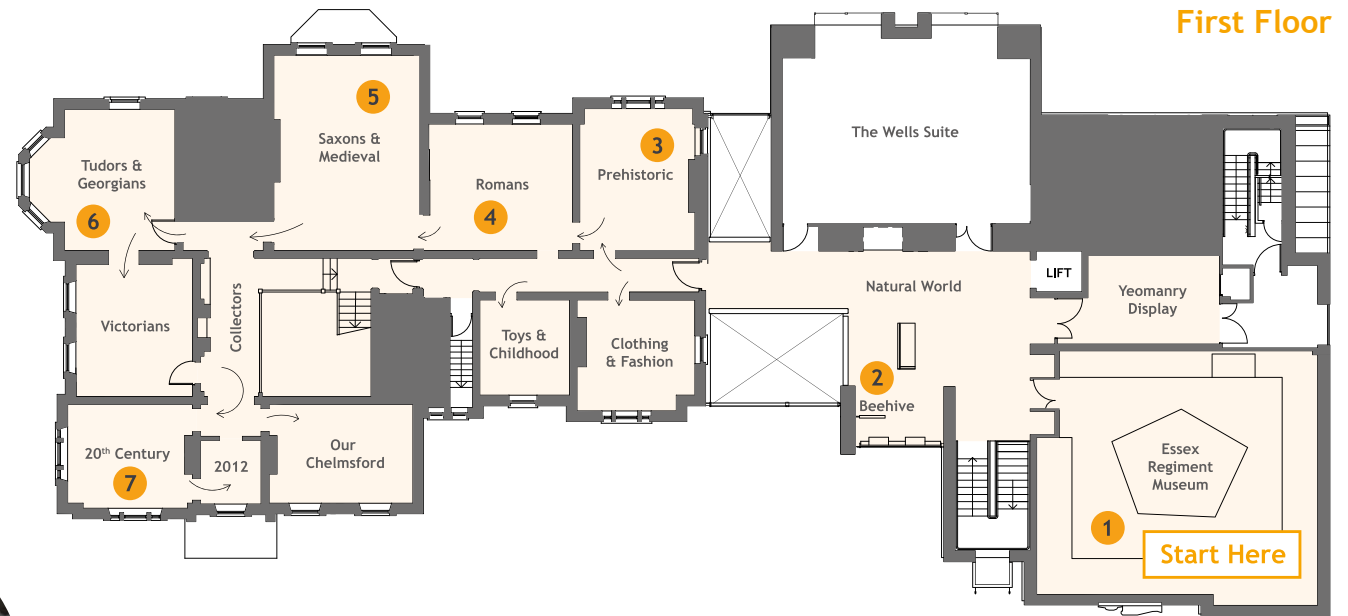
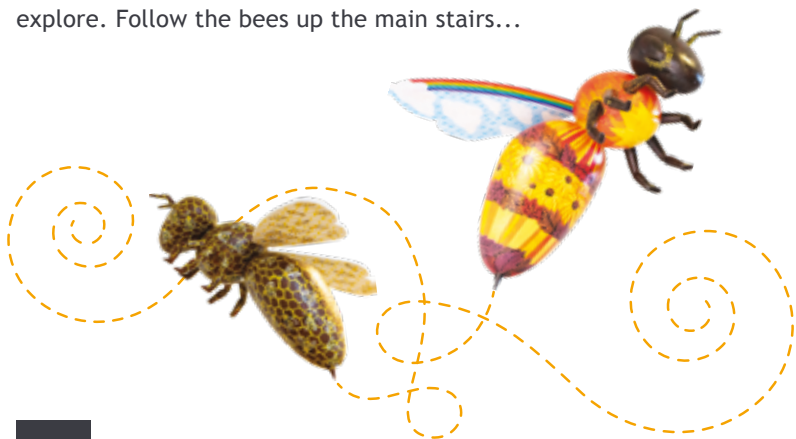
FAMILIES

There's loads to see and do at Chelmsford Museum. It's worth checking out our child friendly amber interactives, we want you to get hands-on!



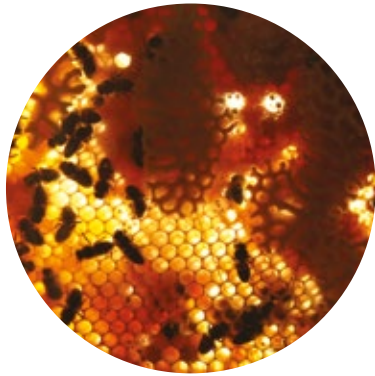
GOT MORE TIME?

If you've got a few more minutes our touch screens have quizzes, games and much more to explore. Follow the bees up the main stairs...



TOP 10

OUR TOP 10 MUST-SEE OBJECTS



2

The Bee Hive *Natural World*

A live beehive - can you spot the queen?

4

Roman Hoodie *Romans*

A model wearing a woollen hooded cloak known as the Birrus Britannicus. This was known to have been a popular export from Roman Britain.



1

The Salamanca Eagle *Essex Regiment Museum*

Captured at the Battle of Salamanca from Napoleon's forces by Lt. Pearce in 1812.



3

Gold Diadem *Prehistoric*

Possibly the oldest piece of gold metalwork in Essex. It was imported from Spain around 2500BC.



5

Broomfield Burial *Saxons & Medieval*

An early Saxon princely burial found in Broomfield in 1888. On loan from the British Museum.



6

Reinagle Painting *Tudors and Georgians*

An oil painting of the Shire Hall by Philip Reinagle showing how the High Street looked in 1794.



8

Boris the Bear *Victorian Hall*

A Russian bear from the Salter Collection. Along with bees, Boris has been a star of the museum for generations.

7

Suzi Quatro's Jumpsuit *20th Century*

The American glam rock star, famous for her black leather jumpsuits, made Chelmsford her home in the 1980s.



9

Perry's Pot *Chelmsford Potters*

Created by Grayson Perry for an exhibition at Hylands House in 2003; it tells the story of the Chelmsford Sissies.



10

RMS Titanic's Radio Room *Bright Sparks*

A replica of the Radio Room on board the ill-fated Titanic. All the original equipment was made in Marconi's Hall Street factory.



WE'RE HERE TO HELP

OUR TEAM ARE HERE TO HELP YOU MAKE THE MOST OF YOUR VISIT, ASK US IF YOU NEED ANYTHING.

DONATIONS

Help us to make the most of our collections, acquire new objects, create innovative exhibitions, be curious and continue to engage with our growing communities. We have donation points in the main welcome hall.

FACILITIES



Toilets



Accessible
toilets



Baby
changing



Hearing
loop

EATING AND DRINKING

Feel free to eat picnics around the park, don't forget to pack a picnic blanket as the picnic tables are popular.

Our Hive Café is open from 7am to 5pm Monday to Sunday.

FREE WI-FI



Available throughout the museum.



GALLERY GUIDELINES

You can take photos for personal use in all the galleries, but please remember to turn off your flash.

Don't forget you can touch some of the exhibits, look out for the amber interactive signs.

Please leave eating and drinking until you reach our café or beautiful park.

KEEP IN TOUCH

Sign up to our email newsletter via our website - fill in the pop-up window or click the link at the bottom of the page to be the first to hear about the museum's upcoming events and activities.

We love seeing our visitors' photos online. Share yours with us for five minutes of fame.



@chelmsfordmuseums



@chelmsmuseum

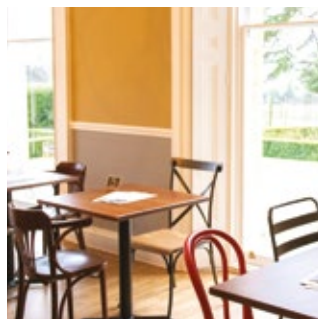


@chelmsfordmuseums

SHOPPING

You can shop in the main welcome hall. There is a range of gifts from pocket money treats to collectable keepsakes linked to our collections.





RELAX IN OUR HIVE CAFÉ

Our Café offers an extensive menu including a selection of options for vegans and little ones.

You are welcome for coffee and pastries from 7am and from 8am full breakfasts and a delicious range of options are served all day.

MON-SUN
7AM-5PM

