

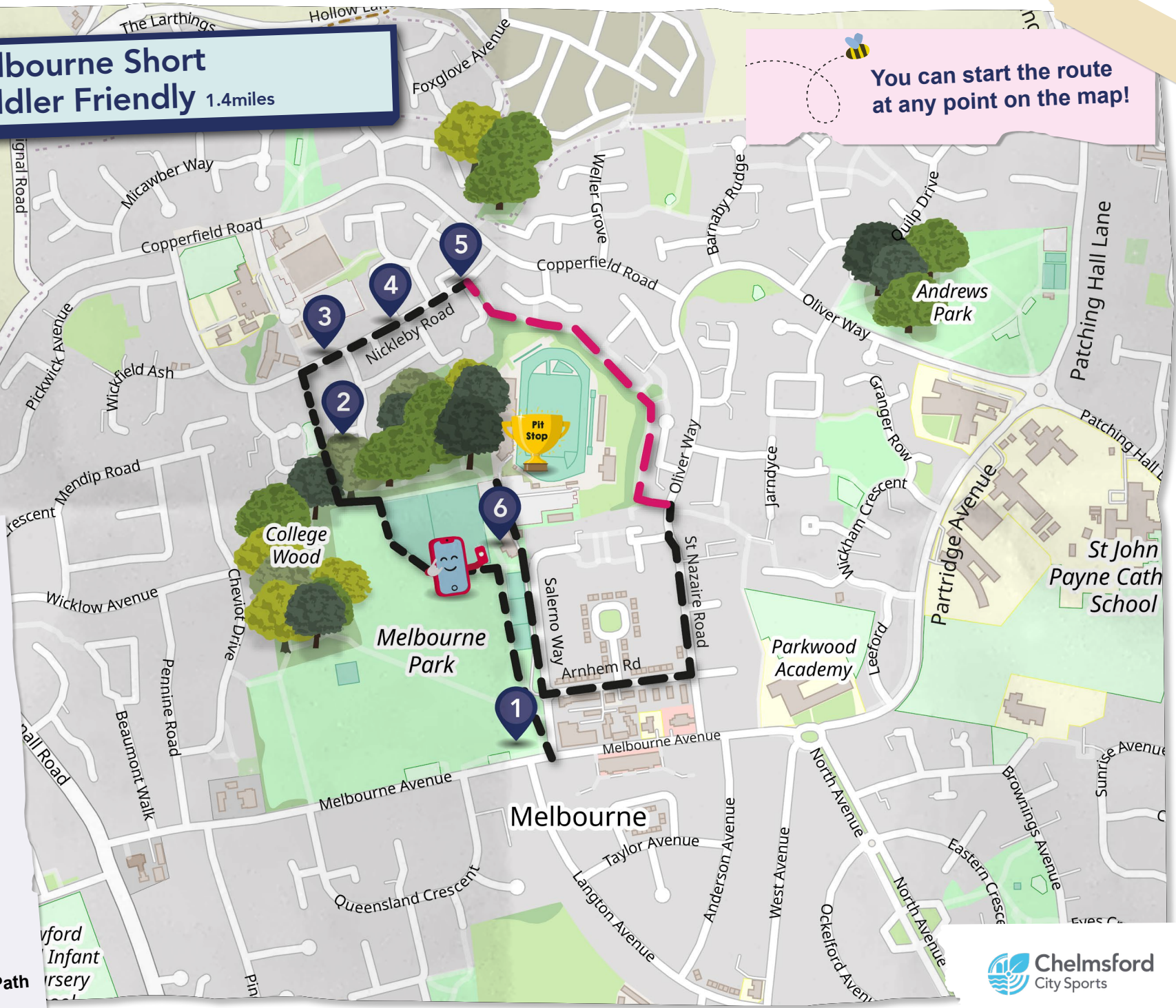


Melbourne Short Toddler Friendly 1.4 miles

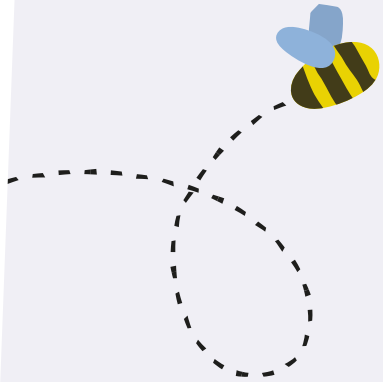
You can start the route at any point on the map!

Key

- 1 I Spy
- Selfie Spot
- Pit Stop
- Visit Stop
- Visit Stop Route
- Cycle Route
- Cycle Route Designated Cycle Path



I Spy



- 1 How many sports pitches are shown on the sign at the entrance to Melbourne park?
- 2 How many swings and what colour are the gates as you enter the Darnay Rise children's play area?
- 3 What red object can you find on Nickleby Road? A clue you might post letters here!
- 4 Can you find the bus route numbers you can take on Nickleby Road? If you can what number buses can you catch to Chelmsford town centre?
- 5 On Wardle Way cut through footpath how many lampposts do you pass?
- 6 What is the name given to the flag as you enter the gates to Chelmsford Sport and Athletics Centre? A clue you will spot the flag flying next to a house.



Selfie Spot

As a family can you take a selfie inside Melbourne park as you complete the route.



Pit Stop

Can you find out who officially opened Chelmsford Sport & Athletics Centre and what year did it open?

Prize Draw

Please submit your answers to csaw@chelmsford.gov.uk to enter the prize giveaway and prize draw. T&C's apply please see website for more information. www.chelmsford.gov.uk/explore

Share

Share your photos and adventures with us [#explorechelmsford](https://twitter.com/explorechelmsford)