

# Tindal Square and Market Road Project Update



Transforming Tindal Square:  
Public Realm Improvements

## Bulletin No. 14

19<sup>th</sup> August 2022

### Contractor Details:

Tindal Square – Dyer & Butler

Market Road – Marlborough Ltd

Project Manager – Rob Venables/Phil Cowland

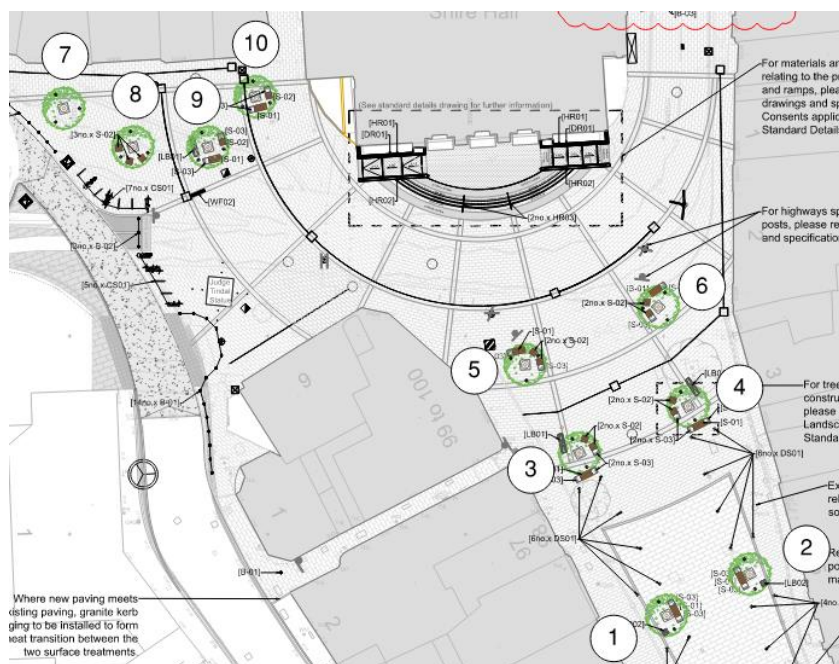


### Latest Achievements:

#### *Tindal Square*

The following has been accomplished since the last update:

- The tree pits for trees four and seven to ten are substantially complete, with the crates used to hold the soil largely in place. The excavation for tree pit six is also well underway.
- Completed the installation of utility chambers (to be used for maintenance of lighting to the trees) to support in ground lighting for trees three and four. The installation of these chambers for trees seven to ten have also commenced.
- Works to divert the gas main outside Shire Hall have been completed by Cadent.
- Completed the ground preparation and began installing paving in areas seven, eight and nine.
- Finished the electrical ducting to Crown Passage.



# Tindal Square and Market Road Project Update



Transforming Tindal Square:  
Public Realm Improvements

**Bulletin No. 14**

**19<sup>th</sup> August 2022**



# Tindal Square and Market Road Project Update



Transforming Tindal Square:  
Public Realm Improvements

## Bulletin No. 14

19<sup>th</sup> August 2022

### Next steps:

#### *Tindal Square*

The next stages in construction for the project are:

- BT Open Reach will be on-site to install their new underground chamber, which will replace the existing one to make way for the new steps to Shire Hall.
- The installation of tree pits for trees four and seven to ten will be complete. Paving works to follow on.
- The underground utility chambers will be installed to provide lighting and power supplies to the area outside Shire Hall.
- All existing signs and street furniture will be removed in preparation for new furniture and lighting to be installed later in the project. Temporary lighting will be installed in the meantime.
- Continuation of the installation of paving, this will cover areas seven, eight and nine.



# Tindal Square and Market Road

## Project Update



Transforming Tindal Square:  
Public Realm Improvements

### Bulletin No. 14

19<sup>th</sup> August 2022

### *Tindal Square*

#### ***Accessibility & our High Street – how Tindal Square will benefit people with physical impairment***

In the second part of a series we take a look at public spaces and how design can support people living with physical impairment.

Flat stable surfaces are vital for people with a physical impairment, the previous yellow clay paving had become uneven in places and would also become slippery when wet. When considering the materials for the new paving we have chosen some that will not become uneven and be less likely to distort with vehicular traffic. These materials offer good traction and offer much better grip-ability than the old substrate.

The practicalities for people with physical impairments were also considered during the selecting of public seating to be installed, with our Access Officer providing detailed guidance throughout the detailed design stage of the project. A conscious effort has been made to choose seating that is maintainable, cost effective and useable for all people which you will see added over the course of the works.

Placement of features such as trees and public seating have also been considered as to not impede persons with physical impairments. We have created sufficient space between each element, allowing easy access to building entrances. Shade levels and luminance have also been considered. Whilst the works are progressing we ensure that there is enough space for persons using mobility scooters, this is regularly inspected by our Access Officer to ensure all needs for persons with physical impairment are met.

We hope that in making these changes the space will be more suitable to be used by all.



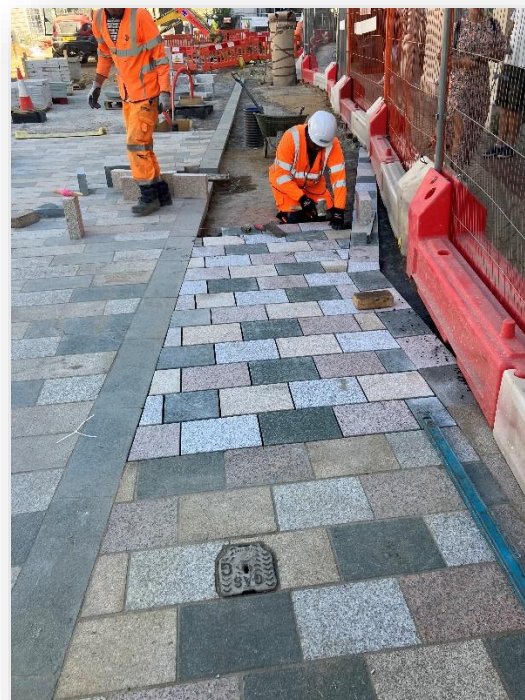
# Tindal Square and Market Road Project Update



Transforming Tindal Square:  
Public Realm Improvements

**Bulletin No. 14**

**19<sup>th</sup> August 2022**



# Tindal Square and Market Road Project Update



Transforming Tindal Square:  
Public Realm Improvements

**Bulletin No. 14**

**19<sup>th</sup> August 2022**

## ***Tindal Square – Safe walking routes***

The diagram below shows the safe walking routes over the next fortnight whilst the works to the central and northwest parts of the work area are completed. Please note access to businesses will be always maintained.



For further information regarding the project please visit:

[www.essexhighways.org/tindal-square](http://www.essexhighways.org/tindal-square)

For general enquiries please email: [tindalsquare@chelmsford.gov.uk](mailto:tindalsquare@chelmsford.gov.uk)